



**OVER 60?**

Secure this property  
for up to **59% less!**

**Price**

**£465,000**

**Freehold**

4x  1x  1x 

**Austin Mews,  
Faversham, Kent, ME13**

*Wards*  
Helping you move forwards



## Main features

- Nearly new house located on new development on the outskirts of town
- Open plan kitchen/diner plus utility
- Close to A2/M2 road links
- Garage and parking for 2 cars
- Enclosed garden, perfect for young kids

## Accommodation

### GROUND FLOOR

Entrance Hall  
 Lounge: 15'5 x 11'5 (4.70m x 3.48m)  
 Kitchen/Diner: 18'9 x 9'5 (5.72m x 2.87m)  
 Utility Room: 5'10 x 5'10 (1.78m x 1.78m)  
 Cloakroom

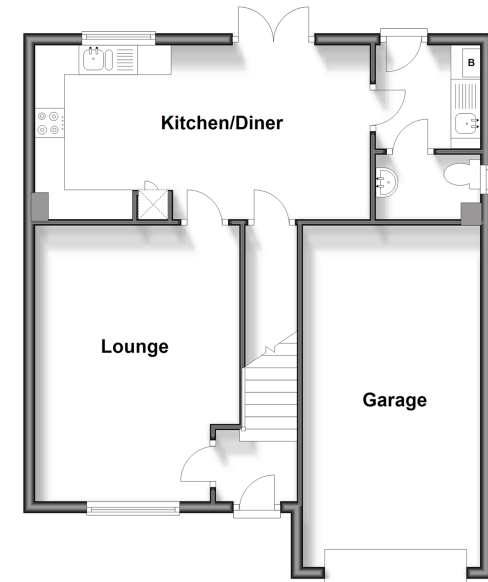
### FIRST FLOOR

Landing  
 Bedroom 1: 10'1 x 9'8 up to recess (3.08m x 2.95m)  
 En-suite Shower Room  
 Bedroom 2: 14'7 x 13'4 (4.45m x 4.07m)  
 Bedroom 3: 14'2 x 8'2 (4.32m x 2.49m)  
 Bedroom 4: 10'5 x 8'3 (3.18m x 2.52m)  
 Bathroom

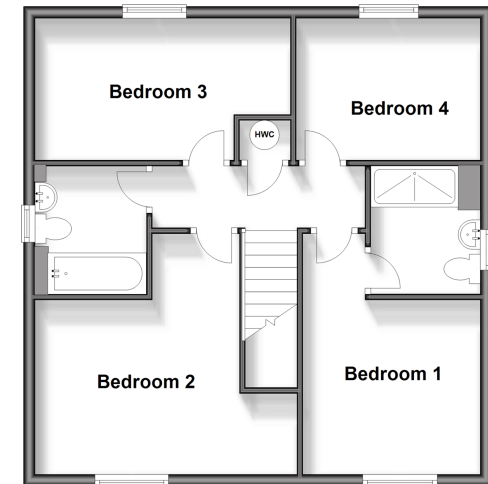
### OUTSIDE

Front Garden  
 Rear Garden  
 Garage  
 Parking for 2 cars

**Ground Floor**  
 Approx. 62.1 sq. metres (668.9 sq. feet)

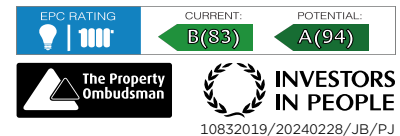


**First Floor**  
 Approx. 58.8 sq. metres (632.7 sq. feet)



**Call Faversham - 01795 535517 ■ [wardsofkent.co.uk](http://wardsofkent.co.uk)**

- Legal advice should be taken to verify fixtures/fittings, planning, alterations and/or lease details
- Appliances & services are untested, dimensions are approximate and floor plans are not to scale
- Through a Homewise Home For Life Plan people aged 60+ can secure this property for up to 59% less, by purchasing a Lifetime Lease.



10832019/20240228/JB/PJ