



**Price**  
**£500,000**

**Freehold**

4x  2x  2x 

**Dan Drive, Faversham,  
Kent, ME13**

**OVER 60?**

Secure this property  
for up to **59% less!**

*Wards*  
Helping you move forwards





## Main features

- Modern family home in quiet cul de sac location
- Located on the western side of Faversham
- Updated kitchen, lounge and separate dining room
- Supermarket and primary school nearby
- Garage plus additional parking

## Accommodation

### GROUND FLOOR

Entrance Hall  
Cloakroom  
Lounge/Diner: 19'1 x 12'1 (5.82m x 3.69m)  
Dining Room/Study: 9'1 x 9'0 (2.77m x 2.75m)  
Kitchen/Breakfast Room: 11'0 x 9'8 (3.36m x 2.95m)  
Utility Room

### FIRST FLOOR

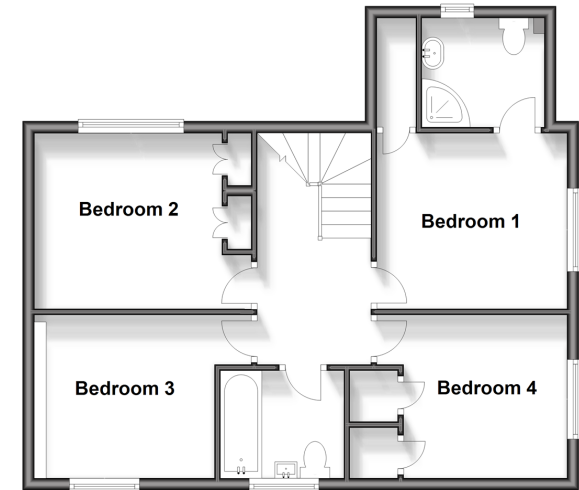
Landing  
Bedroom 1: 11'5 x 10'0 (3.48m x 3.05m)  
En-suite Shower Room  
Bedroom 2: 12'0 x 10'2 (3.66m x 3.10m)  
Bedroom 3: 9'10 x 8'7 (3.00m x 2.62m)  
Bedroom 4: 12'1 x 8'7 (3.69m x 2.62m)  
Bathroom

### OUTSIDE

Front Garden  
Rear Garden  
Garage and driveway

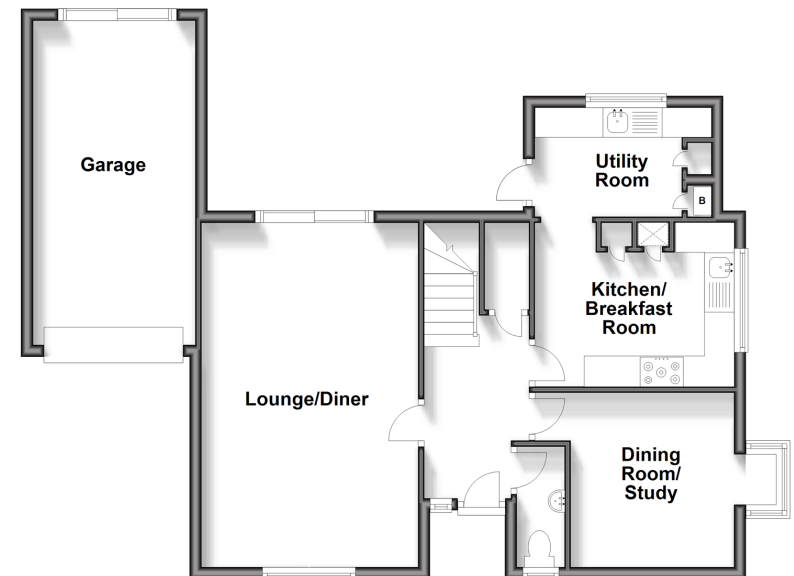
### First Floor

Approx. 57.7 sq. metres (621.4 sq. feet)



### Ground Floor

Approx. 71.6 sq. metres (770.7 sq. feet)



**Call Faversham - 01795 535517 ■ [wardsofkent.co.uk](http://wardsofkent.co.uk)**

- If buying to let, the energy rating will need to be improved to at least 'E' rating before you can let the property
- Legal advice should be taken to verify fixtures/fittings, planning, alterations and/or lease details
- Appliances & services are untested, dimensions are approximate and floor plans are not to scale
- Through a Homewise Home For Life Plan people aged 60+ can secure this property for up to 59% less, by purchasing a Lifetime Lease.



10832023/20240325/JB/PJ