



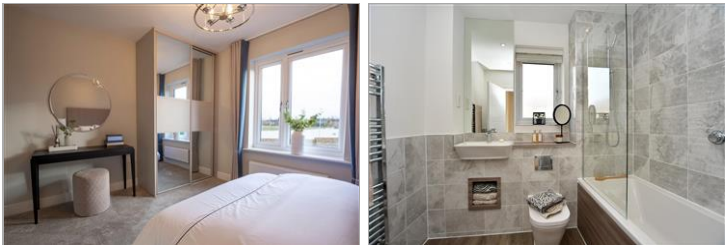
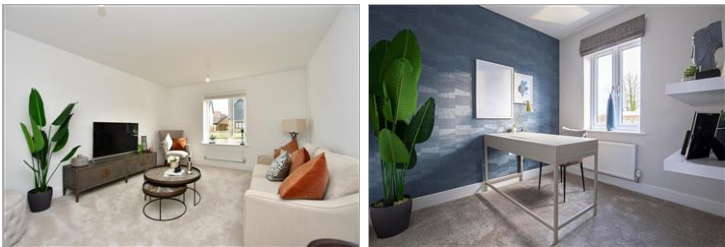
Price
£625,000

Freehold

4x  2x  1x 

**The Willow, Faversham
Lakes, Ham Road,
Faversham, Kent, ME13
7FN**

Wards
Helping you move forwards



Main features

- Contemporary well designed new build family home
- Stunning fitted kitchen with fully integrated Bosch appliances
- Single garage and off road parking
- Patio and laid to lawn rear garden
- Delightful setting amongst a country park and lakes providing fabulous walks

Accommodation

GROUND FLOOR

Entrance Hall

Living Room: 16'7 x 12'3 (5.06m x 3.74m)

Study: 8'9 x 7'5 (2.67m x 2.26m)

Kitchen/Dining Room: 18'10 x 11'10 (5.74m x 3.61m)

Utility Area: 6'0 x 5'11 (1.83m x 1.80m)

Boot Room Area: 6'0 x 4'3 (1.83m x 1.30m)

Cloakroom

FIRST FLOOR

Landing

Bedroom 1: 14'5 x 12'3 (4.40m x 3.74m)

En-suite Shower Room

Bedroom 2: 14'2 x 12'3 (4.32m x 3.74m)

Bedroom 3: 12'8 x 8'9 (3.86m x 2.67m)

Bedroom 4: 10'8 x 7'8 (3.25m x 2.34m)

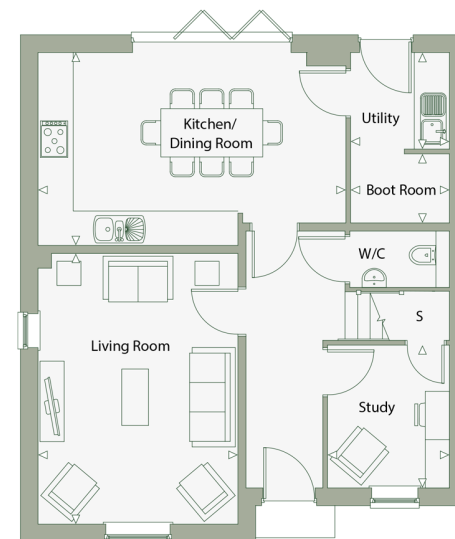
Bathroom

OUTSIDE

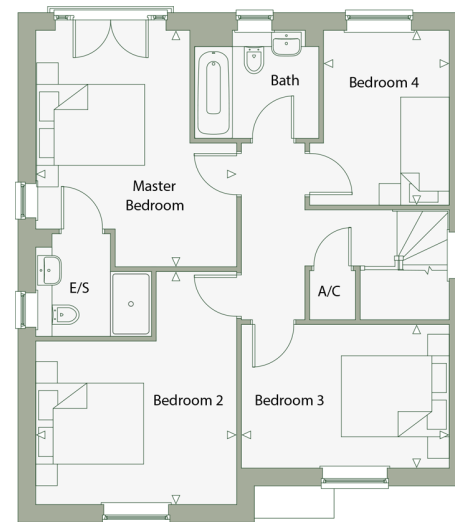
Rear Garden

Single Garage

Off Road Parking for 2 Cars



Ground Floor



First Floor

Call Faversham - 01795 535517 ■ wardsof Kent.co.uk

- If buying to let, the energy rating will need to be improved to at least 'E' rating before you can let the property
- Legal advice should be taken to verify fixtures/fittings, planning, alterations and/or lease details
- Appliances & services are untested, dimensions are approximate and floor plans are not to scale



10832032/20240327/JB/PJ