



**Price**  
**£340,000**

**Freehold**

2x  1x  1x 

**The Bay, Faversham  
Lakes, Ham Road,  
Faversham, Kent, ME13**

*Wards*  
Helping you move forwards





## Main features

- Contemporary house in delightful setting
- Open plan living with doors leading out onto the garden
- Bosch integrated appliances
- Private rear garden with turf and patio included
- Off-road parking for 2 cars, outdoor socket and tap

## Accommodation

### GROUND FLOOR

Entrance Hallway

Kitchen/Dining Area: 14'5 x 8'4 (4.40m x 2.54m)

Living Area: 15'7 x 9'11 (4.75m x 3.02m)

Cloakroom

### FIRST FLOOR

Landing

Bedroom 1: 15'7 x 8'7 (4.75m x 2.62m)

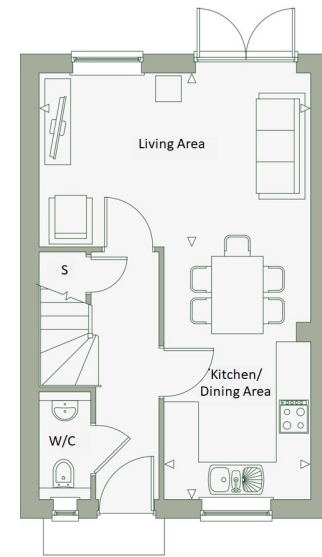
Bedroom 2: 15'7 x 8'3 (4.75m x 2.52m)

Bathroom: 7'9 x 7'1 (2.36m x 2.16m)

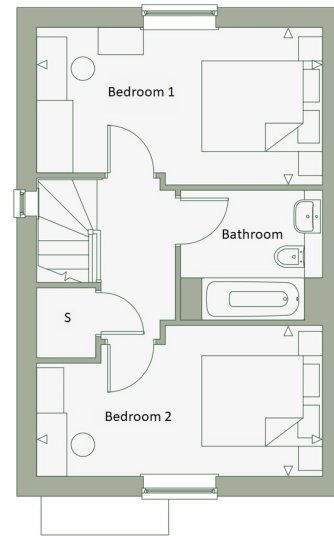
### OUTSIDE

Rear Garden

Off Road Parking



Ground Floor



First Floor

**Call Faversham - 01795 535517 ■ [wardsofkent.co.uk](http://wardsofkent.co.uk)**

- If buying to let, the energy rating will need to be improved to at least 'E' rating before you can let the property
- Legal advice should be taken to verify fixtures/fittings, planning, alterations and/or lease details
- Appliances & services are untested, dimensions are approximate and floor plans are not to scale



10832037/20240311/JB/PJ