



OVER 60?

Secure this property
for up to **59% less!**

Price
£575,000

Freehold

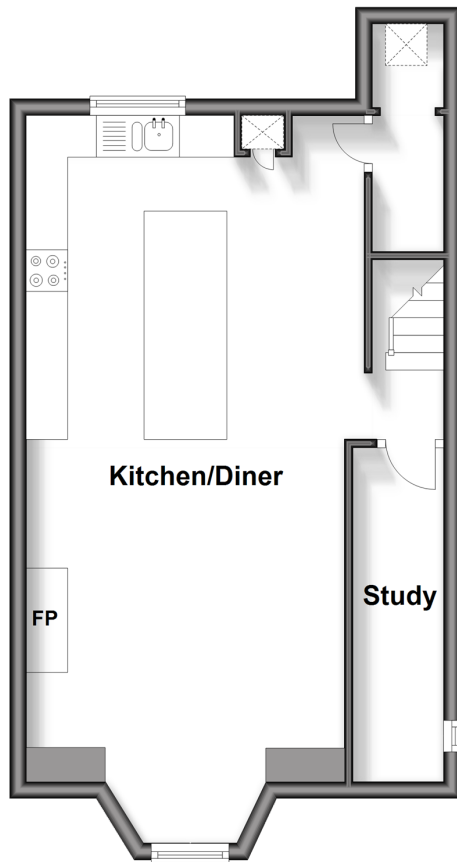
3x  2x  2x 

**Newton Road,
Faversham, Kent, ME13**

Wards
Helping you move forwards

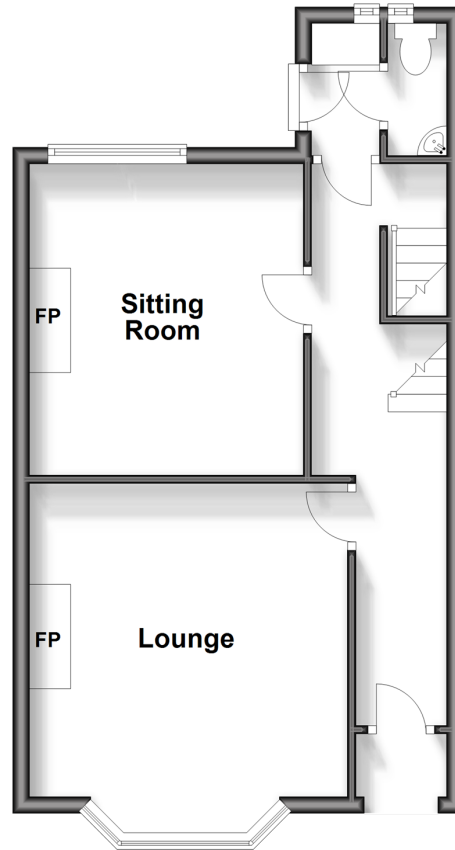
Lower Ground Floor

Approx. 42.3 sq. metres (455.3 sq. feet)



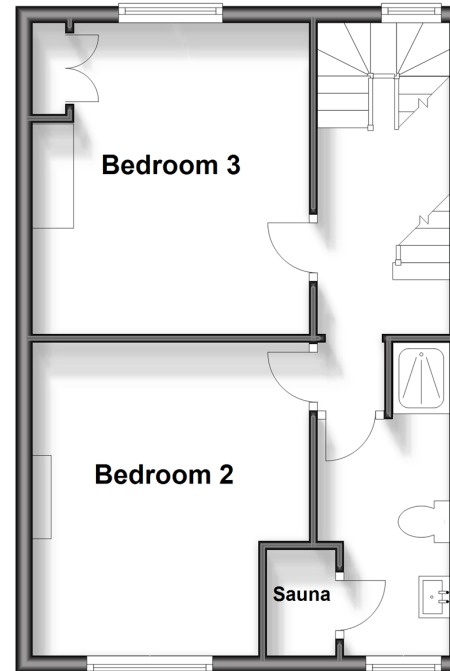
Ground Floor

Approx. 41.3 sq. metres (444.2 sq. feet)



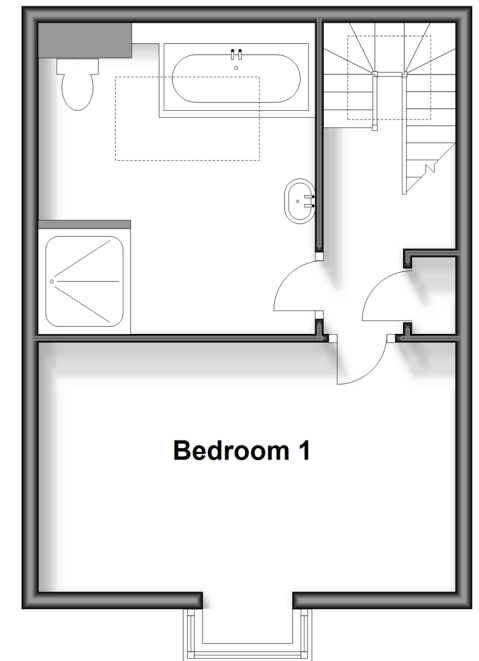
First Floor

Approx. 38.2 sq. metres (411.3 sq. feet)



Second Floor

Approx. 34.7 sq. metres (373.6 sq. feet)



Accommodation

GROUND FLOOR

Entrance Hall
Lounge: 14'11 x 12'10 (4.55m x 3.91m)
Sitting Room: 12'5 x 10'0 (3.79m x 3.05m)
Cloakroom

LOWER GROUND FLOOR

Kitchen/Diner: 27'6 x 13'2 (8.39m x 4.02m)
Store Cupboard
Study: 13'2 x 3'7 (4.02m x 1.09m)

FIRST FLOOR

Bedroom 2: 12'8 x 10'10 (3.86m x 3.30m)
Bedroom 3: 12'4 x 10'5 (3.76m x 3.18m)
Shower Room with Sauna

SECOND FLOOR

Bedroom 1: 15'10 x 10'10 (4.83m x 3.30m)
Bathroom

OUTSIDE

Front Garden
Courtyard Rear Garden



Main features

- Well presented Victorian town house
- Accommodation arranged over 4 floors
- Superb lower ground floor kitchen/dining area with quality fitted kitchen
- Short stroll from town centre and mainline station, perfect for commuters
- Courtyard style easy to maintain garden



Nearest Schools

Primary Schools: St Mary of Charity CE (Aided) Primary 0.1 miles, Ethelbert Road Infant School 0.4 miles, Davington Primary 0.5 miles

Secondary Schools: Queen Elizabeth's Grammar School



Transport Information

Train Stations: Faversham 0.1 miles, Selling 3.2 miles, Teynham 3.8 miles



Address

Newton Road, Faversham, Kent, ME13



Directions

For directions to this property please contact us.



Wards
Helping you move forwards

Call Faversham Branch 01795 535517 ■ wardsofkent.co.uk



■ Legal advice should be taken to verify fixtures/fittings, planning, alterations and/or lease details ■ Appliances & services are untested, dimensions are approximate and floor plans are not to scale
■ Through a Homewise Home For Life Plan people aged 60+ can secure this property for up to 59% less, by purchasing a Lifetime Lease.



10832041/20240318/JB/PJ