



OVER 60?

Secure this property
for up to **59% less!**

Price

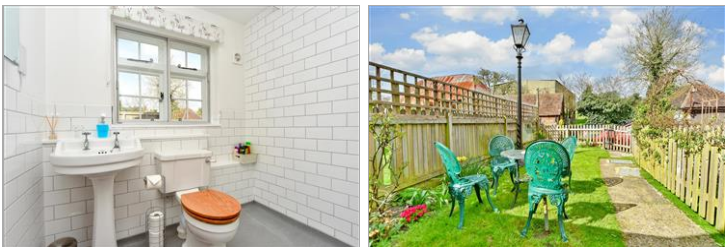
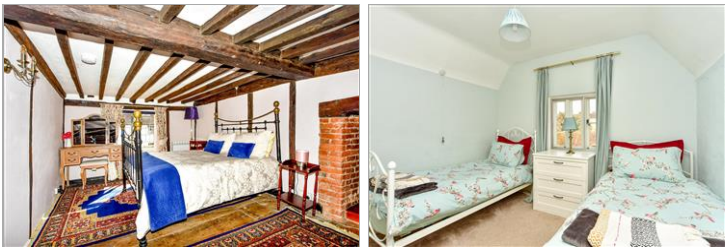
£340,000

Freehold

2x  1x  1x 

**Yew Tree Cottage, The
Street, Doddington,
Sittingbourne, Kent,
ME9**

Wards
Helping you move forwards



Main features

- Delightful Grade II listed cottage dating back to the 15th Century
- Many original features including inglenook fireplace
- Modern kitchen and bathroom
- Stunning village location close to lovely country walks
- Currently used as a successful holiday let

Accommodation

GROUND FLOOR

Entrance Hall

Lounge: 17'11 x 10'7 (5.46m x 3.23m)

Kitchen/Diner: 10'4 x 10'3 (3.15m x 3.13m)

Lobby

Shower/Wet Room

FIRST FLOOR

Landing

Bedroom 1: 15'3 x 10'4 (4.65m x 3.15m)

Bedroom 2: 10'5 x 10'2 (3.18m x 3.10m)

OUTSIDE

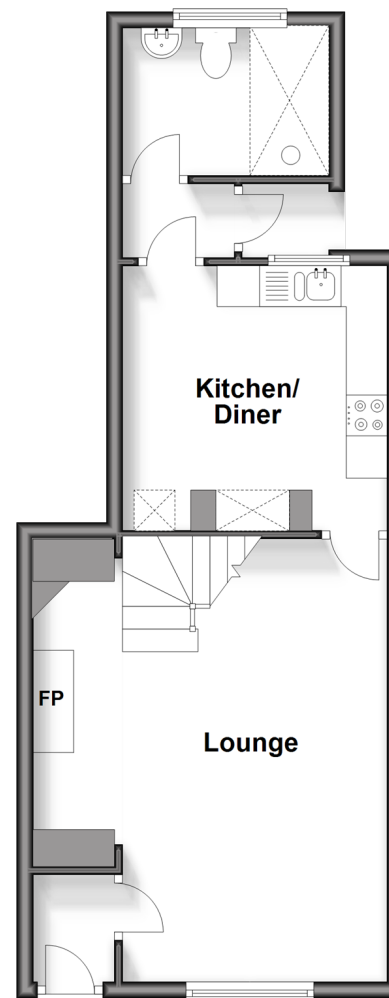
Front Garden

Rear Garden

Parking for 1 car

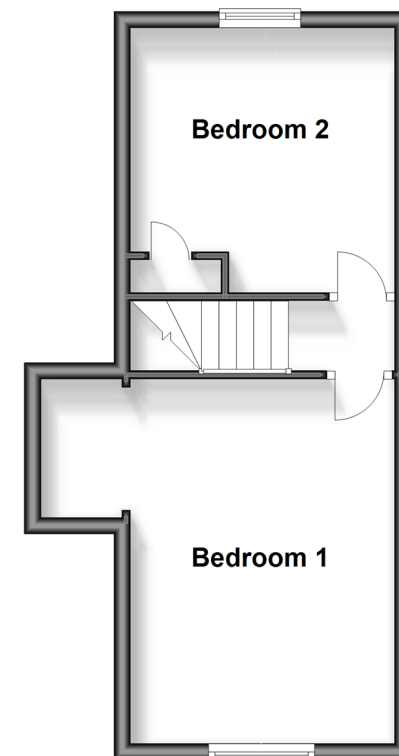
Split Level Ground Floor

Approx. 40.5 sq. metres (435.5 sq. feet)



First Floor

Approx. 30.3 sq. metres (326.0 sq. feet)



Call Faversham - 01795 535517 ■ wardsofkent.co.uk

- If buying to let, the energy rating will need to be improved to at least 'E' rating before you can let the property
- Legal advice should be taken to verify fixtures/fittings, planning, alterations and/or lease details
- Appliances & services are untested, dimensions are approximate and floor plans are not to scale
- Through a Homewise Home For Life Plan people aged 60+ can secure this property for up to 59% less, by purchasing a Lifetime Lease.

