



Price
£325,000

Freehold

2x  1x  1x 

**Serpentine Road,
Faversham, Kent, ME13**

OVER 60?

Secure this property
for up to **59% less!**

Wards
Helping you move forwards



Main features

- Modern house only 1 year old
- Smart new development on the western side of Faversham
- Delightful country park to explore with views across Oare Creek
- Parking for 2 cars with EV charger
- No onward chain

Accommodation

GROUND FLOOR

Entrance Hall
Cloakroom
Lounge/Dining Area: 15'6 x 9'11 (4.73m x 3.02m)
Kitchen: 14'6 x 8'3 (4.42m x 2.52m)

FIRST FLOOR

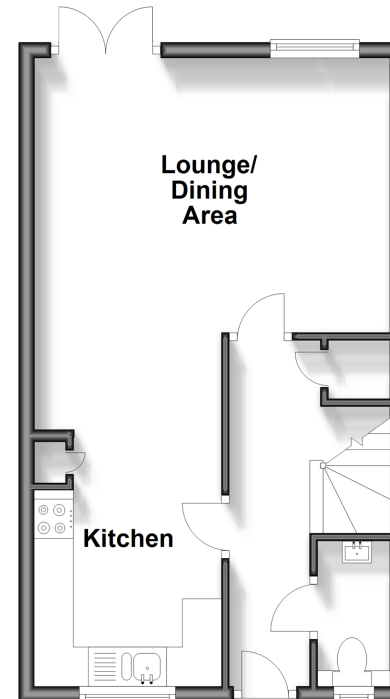
Landing
Bedroom 1: 13'8 x 8'6 (4.17m x 2.59m)
Bedroom 2: 15'6 x 8'1 (4.73m x 2.47m)
Bathroom

OUTSIDE

Front Garden
Rear Garden

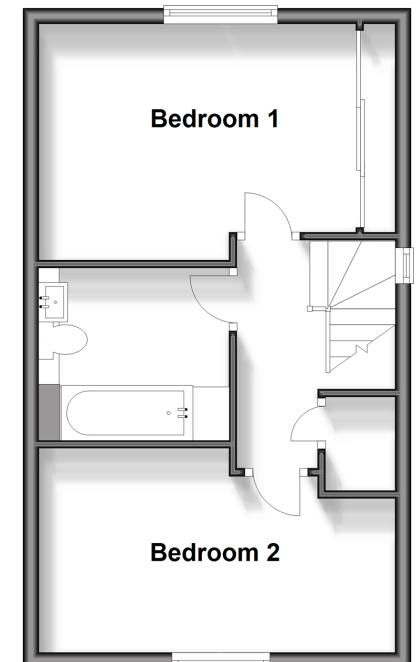
Ground Floor

Approx. 36.3 sq. metres (391.0 sq. feet)



First Floor

Approx. 36.3 sq. metres (391.2 sq. feet)



Call Faversham - 01795 535517 ■ wardsofkent.co.uk

■ Legal advice should be taken to verify fixtures/fittings, planning, alterations and/or lease details
■ Through a Homewise Home For Life Plan people aged 60+ can secure this property for up to 59% less, by purchasing a Lifetime Lease.

■ Appliances & services are untested, dimensions are approximate and floor plans are not to scale



10832052/20240514/SJ/PJ