



OVER 60?

Secure this property
for up to **59% less!**

Price
£265,000

Freehold

2x  1x  1x 

**Ospringe Road,
Faversham, Kent, ME13**

Wards
Helping you move forwards



Main features

- Vacant house with no onward chain
- Handy location just a short walk to the town centre
- Useful cellar
- Easy to manage rear garden
- Ideal first home or investment opportunity

Accommodation

GROUND FLOOR

Lounge: 12'0 x 10'0 (3.66m x 3.05m)
 Kitchen: 10'11 x 9'8 (3.33m x 2.95m)
 Rear Lobby
 Bathroom

BASEMENT

Cellar: 11'10 x 9'0 (3.61m x 2.75m)

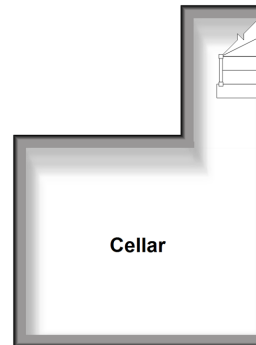
FIRST FLOOR

Landing
 Bedroom 1: 12'0 x 10'0 (3.66m x 3.05m)
 Bedroom 2: 12'0 x 9'7 (3.66m x 2.92m)

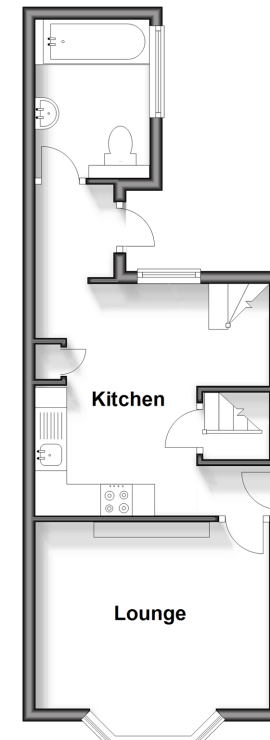
OUTSIDE

Rear Garden

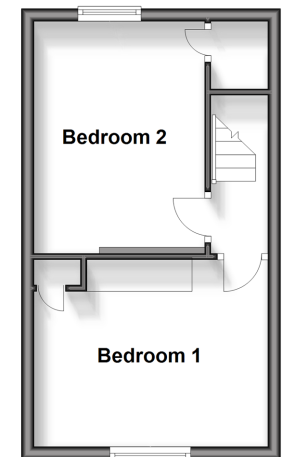
Basement
 Approx. 13.1 sq. metres (141.2 sq. feet)



Ground Floor
 Approx. 31.8 sq. metres (342.7 sq. feet)



First Floor
 Approx. 25.0 sq. metres (268.8 sq. feet)



Call Faversham - 01795 535517 ■ wardsofkent.co.uk

■ Legal advice should be taken to verify fixtures/fittings, planning, alterations and/or lease details
 ■ Through a Homewise Home For Life Plan people aged 60+ can secure this property for up to 59% less, by purchasing a Lifetime Lease.

■ Appliances & services are untested, dimensions are approximate and floor plans are not to scale



10832057/20240405/JB/PJ