



OVER 60?

Secure this property
for up to **59% less!**

Price

£350,000

Freehold

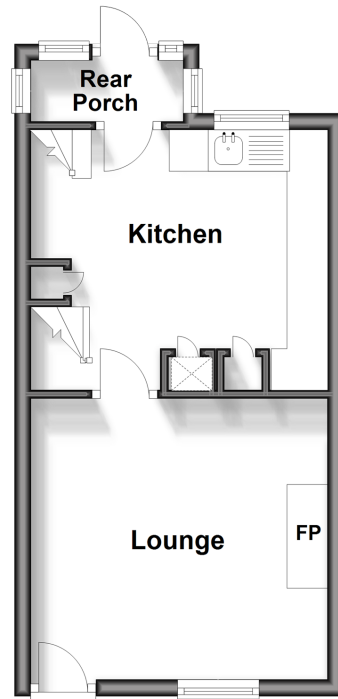
2x  1x  2x 

**Bevans Terrace, Dully
Hill, Doddington,
Sittingbourne, Kent,
ME9**

Wards
Helping you move forwards

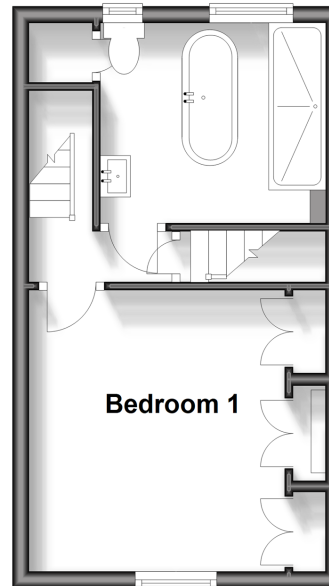
Ground Floor

Approx. 25.7 sq. metres (277.1 sq. feet)



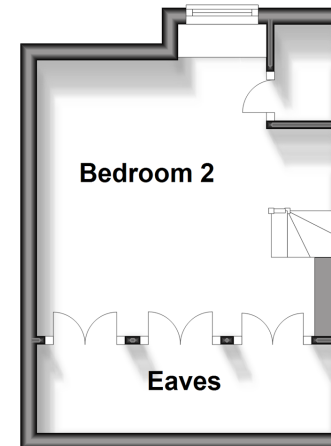
First Floor

Approx. 24.1 sq. metres (259.6 sq. feet)



Second Floor

Approx. 17.2 sq. metres (185.3 sq. feet)



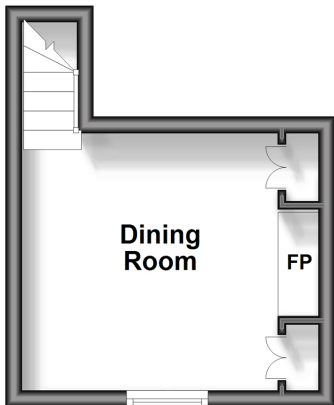
Outbuilding

Approx. 8.6 sq. metres (92.9 sq. feet)



Lower Ground Floor

Approx. 12.2 sq. metres (131.5 sq. feet)



Accommodation

GROUND FLOOR

Lounge: 11'11 x 10'11 (3.63m x 3.33m)

Kitchen: 9'6 x 9'3 (2.90m x 2.82m)

Rear Porch

FIRST FLOOR

Landing

Bedroom 1: 10'10 x 9'4 (3.30m x 2.85m)

Bathroom

SECOND FLOOR

Bedroom 2: 10'9 x 10'5 (3.28m x 3.18m)

OUTSIDE

Garden

Parking for 1 car

LOWER GROUND FLOOR

Dining Room: 11'10 x 9'3 (3.61m x 2.82m)

OUTBUILDING

Room 1



Main features

- Stunning country cottage in delightful rural village with local store and pub
- Accommodation arranged over 4 floors offering separate lounge and dining room
- Parking and useful store
- Located in an elevated spot with superb views over fields and farmland
- Ideal location for access to Faversham, Sittingbourne, Ashford and Maidstone



Nearest Schools

Primary Schools: Milstead and Frinsted C of E Primary 1.6 miles, Eastling Primary 2.3 miles

Secondary Schools: Swadelands School 3.6 miles, Meadowfield School 3.6 miles



Transport Information

Train Stations: Teynham 4.1 miles, Sittingbourne 4.3 miles, Kemsley 5.6 miles



Address

Bevans Terrace, Dully Hill, Doddington, Sittingbourne, Kent, ME9



Directions

For directions to this property please contact us.



Wards
Helping you move forwards

Call Faversham Branch 01795 535517 ■ wardsofkent.co.uk



■ Legal advice should be taken to verify fixtures/fittings, planning, alterations and/or lease details ■ Appliances & services are untested, dimensions are approximate and floor plans are not to scale
■ Through a Homewise Home For Life Plan people aged 60+ can secure this property for up to 59% less, by purchasing a Lifetime Lease.



10832059/20240419/JB/PJ