



Price
£325,000

Freehold

3x  2x  1x 

**Bond Close, Faversham,
Kent, ME13**

Wards
Helping you move forwards



Main features

- Modern house within walking distance to local primary schools
- Fully fitted kitchen with integrated appliances
- Open plan kitchen/diner
- French doors leading out onto the garden
- Driveway and parking for 2 cars

Accommodation

GROUND FLOOR

Entrance Hall

Lounge: 11'8 x 11'8 (3.56m x 3.56m)

Kitchen/Diner: 15'2 x 10'9 (4.63m x 3.28m)

Cloakroom

FIRST FLOOR

Landing

Bedroom 1: 9'8 x 8'10 (2.95m x 2.69m)

En-suite Shower Room

Bedroom 2: 8'9 x 6'7 (2.67m x 2.01m)

Bedroom 3: 9'7 x 7'10 (2.92m x 2.39m)

Bathroom

OUTSIDE

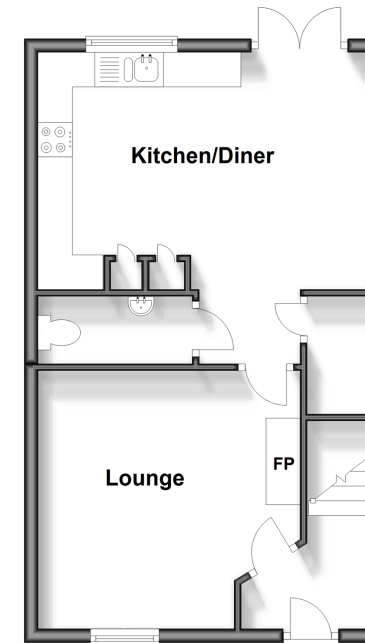
Front and Rear Gardens

Driveway

Parking for 2 cars

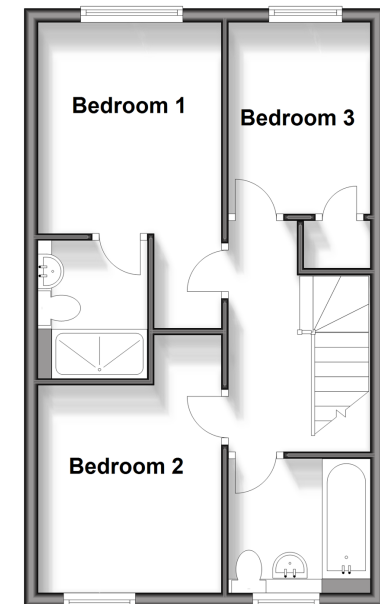
Ground Floor

Approx. 40.3 sq. metres (434.2 sq. feet)



First Floor

Approx. 40.0 sq. metres (430.2 sq. feet)



Call Faversham - 01795 535517 ■ wardsof Kent.co.uk

- If buying to let, the energy rating will need to be improved to at least 'E' rating before you can let the property
- Legal advice should be taken to verify fixtures/fittings, planning, alterations and/or lease details
- Appliances & services are untested, dimensions are approximate and floor plans are not to scale



10832069/20240508/JB/PJ