



OVER 60?

Secure this property
for up to **59% less!**

Price
£150,000

Leasehold

2x  1x  1x 

**Canterbury Street,
Gillingham, Kent, ME7**

Wards
Helping you move forwards



Main features

- Ground floor flat with additional basement room
- Private rear garden
- Long lease of 120 years
- Low ground rent and no service charge
- Gas central heating and double glazing

Accommodation

GROUND FLOOR

Communal Hallway

Hallway

Bedroom 1: 15'1 at widest point x 8'4 at widest point (4.60m x 2.54m)

Lounge: 11'9 x 9'6 (3.58m x 2.90m)

Bathroom

Kitchen: 6'9 x 5'1 (2.06m x 1.55m)

Bedroom 2: 10'2 x 5'9 (3.10m x 1.75m)

BASEMENT

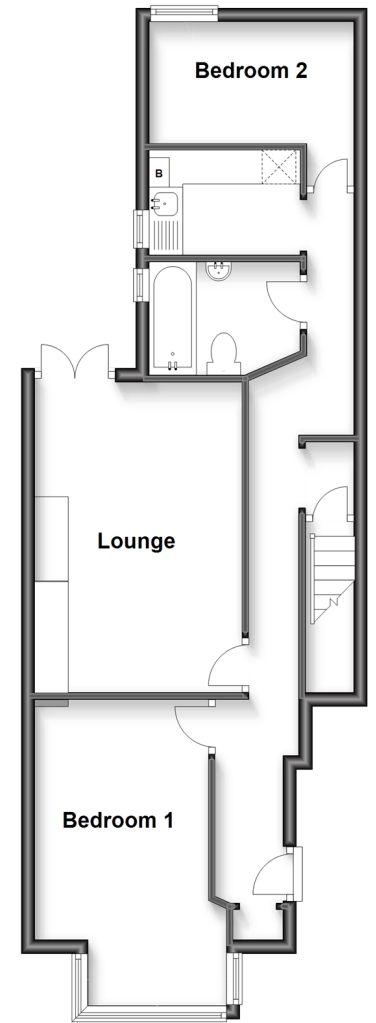
Basement Room: 15'0 maximum (4.58m) narrowing to 10'6 (3.20m) x 14'6 (4.42m)

OUTSIDE

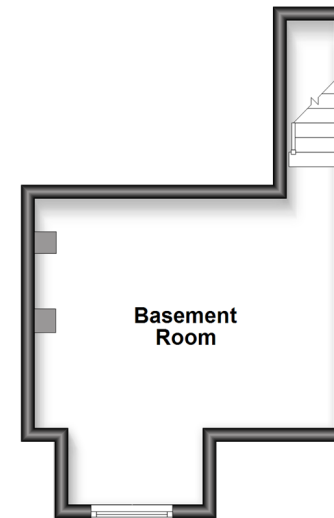
Front Garden

Rear Garden

Ground Floor
Approx. 53.5 sq. metres (576.1 sq. feet)



Basement
Approx. 19.2 sq. metres (207.0 sq. feet)



Call Gillingham - 01634 851191 ■ wardsofkent.co.uk

- Legal advice should be taken to verify fixtures/fittings, planning, alterations and/or lease details
- Appliances & services are untested, dimensions are approximate and floor plans are not to scale
- Through a Homewise Home For Life Plan people aged 60+ can secure this property for up to 59% less, by purchasing a Lifetime Lease.



10918639/20240221/JS/GS