



Price
£270,000

Freehold

3x  1x  2x 

**The Ridgeway,
Gillingham, Kent, ME7**

OVER 60?

Secure this property
for up to **59% less!**

Wards
Helping you move forwards



Main features

- Separate bedrooms and upstairs bathroom
- Modern fitted kitchen
- Situated in a cul-de-sac position
- Within walking distance of Gillingham High Street & Mainline Station
- Gas central heating & double glazing

Accommodation

GROUND FLOOR

Entrance Hall

Lounge: 12'9 into bay x 12'3 (3.89m x 3.74m)

Dining Area: 11'6 x 9'7 (3.51m x 2.92m)

Kitchen: 7'9 x 7'2 (2.36m x 2.19m)

Conservatory: 13'5 x 8'6 (4.09m x 2.59m)

FIRST FLOOR

Landing

Bedroom 1: 11'8 x 11'3 (3.56m x 3.43m)

Bedroom 2: 11'2 x 11'1 (3.41m x 3.38m)

Bedroom 3: 7'4 x 6'4 (2.24m x 1.93m)

Bathroom

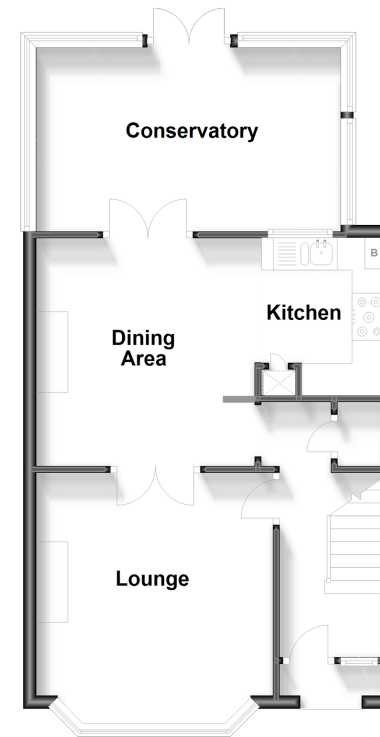
OUTSIDE

Front Garden

Rear Garden

Ground Floor

Approx. 52.1 sq. metres (560.8 sq. feet)



First Floor

Approx. 38.6 sq. metres (415.3 sq. feet)



Call Gillingham - 01634 851191 ■ wardsof Kent.co.uk

- Legal advice should be taken to verify fixtures/fittings, planning, alterations and/or lease details
- Appliances & services are untested, dimensions are approximate and floor plans are not to scale
- Through a Homewise Home For Life Plan people aged 60+ can secure this property for up to 59% less, by purchasing a Lifetime Lease.



10919288/20230731/JS/GS