



Price
£425,000

Freehold

4x  2x  2x 

**Danes Hill, Gillingham,
Kent, ME7**

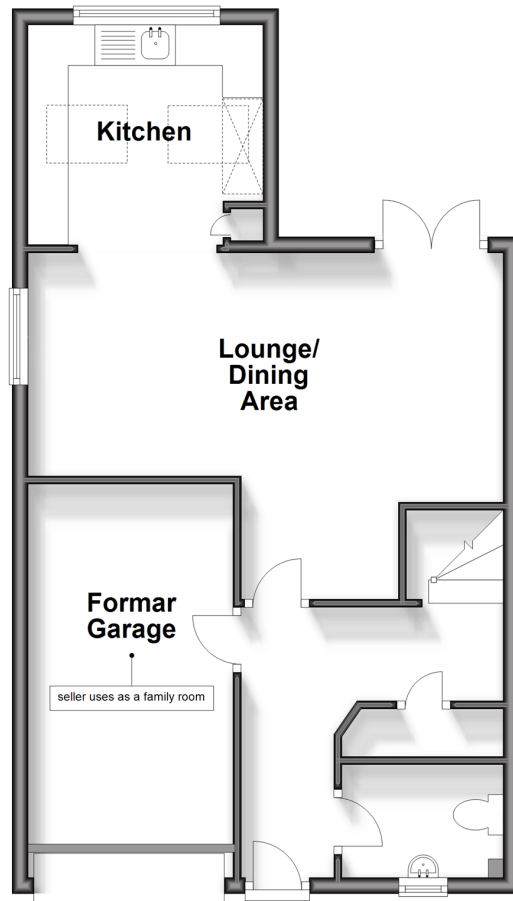
OVER 60?

Secure this property
for up to **59% less!**

Wards
Helping you move forwards

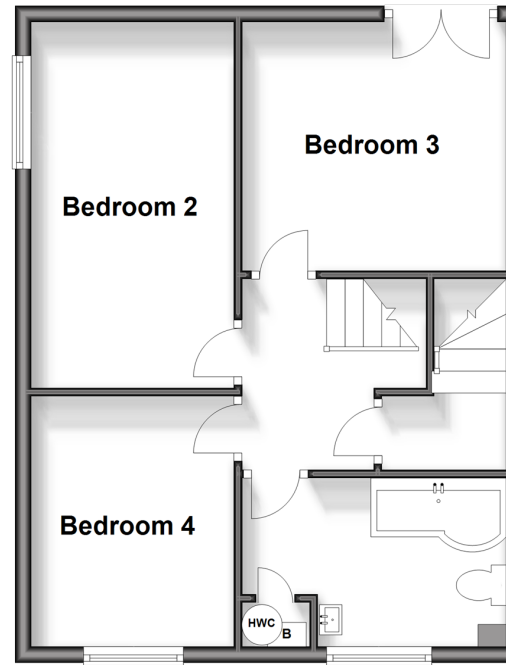
Ground Floor

Approx. 53.6 sq. metres (577.1 sq. feet)



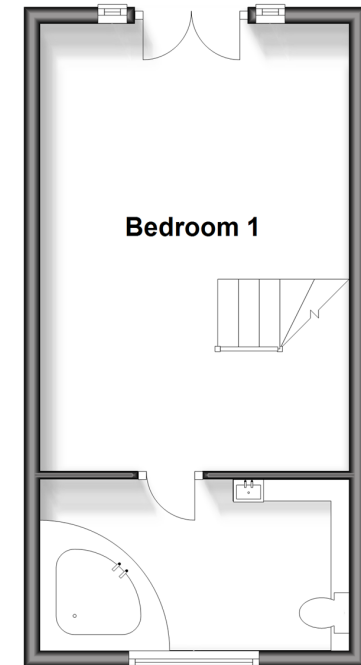
First Floor

Approx. 45.4 sq. metres (489.0 sq. feet)



Second Floor

Approx. 29.7 sq. metres (319.5 sq. feet)



Accommodation

GROUND FLOOR

Entrance Hall

Cloakroom

Family Room (Former Garage): 16'0 x 8'9
(4.88m x 2.67m)

Lounge/Dining Area: 20'6 at widest point
x 15'3 at widest point (6.25m x 4.65m)
narrowing to 11'0 x 8'1 (3.36m x 2.47m)

Kitchen: 9'8 x 8'0 (2.95m x 2.44m)

FIRST FLOOR

Landing

Bedroom 3: 11'4 x 11'4 (3.46m x 3.46m)

Bedroom 2: 14'4 x 8'7 (4.37m x 2.62m)

Bedroom 4: 10'1 x 8'7 (3.08m x 2.62m)

Bathroom

SECOND FLOOR

Bedroom 1: 18'0 x 12'4 (5.49m x 3.76m)

En-Suite Bathroom

OUTSIDE

Off-Road Parking

Rear Garden



Main features

- Modern semi-detached house in a cul-de-sac position
- Superbly spacious and well presented family home on the outskirts of Gillingham
- Off-road parking for multiple vehicles
- Cloakroom, family bathroom and en-suite bathroom
- Gas central heating and double glazing



Nearest Schools

Primary: Saxon Way 0.6 miles, Woodlands 0.6 miles, St Mary's Catholic 0.7 miles

Secondary: Robert Napier 1.0 miles, Brompton Academy 1.5 miles, Chatham Grammar School for Girls 1.5 miles



Transport Information

Train Stations: Gillingham 0.9 miles, Rainham 2.3 miles, Chatham 2.4 miles



Address

Danes Hill, Gillingham, Kent, ME7



Directions

For directions to this property please contact us.



Call Gillingham Branch 01634 851191 ■ wardsofkent.co.uk



- Legal advice should be taken to verify fixtures/fittings, planning, alterations and/or lease details
- Appliances & services are untested, dimensions are approximate and floor plans are not to scale
- Through a Homewise Home For Life Plan people aged 60+ can secure this property for up to 59% less, by purchasing a Lifetime Lease.



10919727/20240425/JS/GS