



**Price**  
**£250,000**

**Freehold**

3x  1x  3x 

**Toronto Road,  
Gillingham, Kent, ME7**

*Wards*  
Helping you move forwards





## Main features

- Edwardian terraced house with separate bedrooms - ideal first time buy or family home
- Larger than average accommodation with versatile living space
- Modern gloss finish kitchen
- Downstairs bathroom & upstairs cloakroom
- Gas central heating & double glazing

## Accommodation

### GROUND FLOOR

Porch  
Hallway  
Lounge: 13'4 at widest point x 11'10 at widest point (4.07m x 3.61m)  
Sitting Room: 12'0 at widest point x 11'7 at widest point (3.66m x 3.53m)  
Dining Room: 11'3 x 8'4 (3.43m x 2.54m)  
Kitchen: 12'4 x 8'5 (3.76m x 2.57m)  
Lobby  
Bathroom

### FIRST FLOOR

Landing  
Bedroom 1: 14'2 x 11'4 (4.32m x 3.46m)  
Bedroom 2: 12'2 x 7'6 (3.71m x 2.29m)  
Cloakroom  
Bedroom 3: 13'0 x 8'4 (3.97m x 2.54m)

### OUTBUILDING

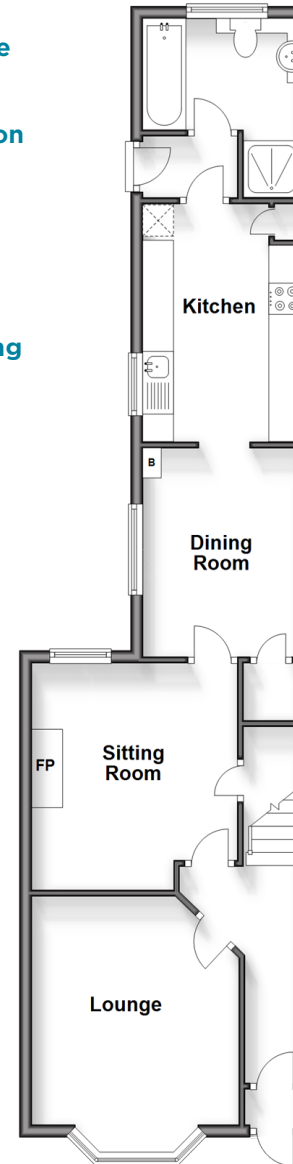
Room 1 (used as a store room)

### OUTSIDE

Front Courtyard  
Rear Garden

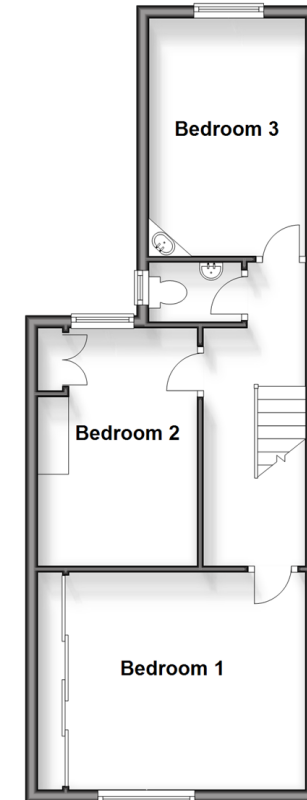
### Ground Floor

Approx. 58.5 sq. metres (629.3 sq. feet)



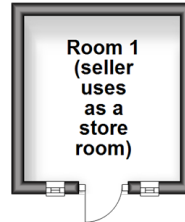
### First Floor

Approx. 44.6 sq. metres (480.3 sq. feet)



### Outbuilding

Approx. 6.7 sq. metres (72.5 sq. feet)



**Call Gillingham - 01634 851191 ■ [wardsforkent.co.uk](http://wardsforkent.co.uk)**

- Legal advice should be taken to verify fixtures/fittings, planning, alterations and/or lease details
- Appliances & services are untested, dimensions are approximate and floor plans are not to scale



10921360/20240424/JS/GS