



Price
£230,000

Freehold

3x  2x  1x 

**Richmond Road,
Gillingham, Kent, ME7**

Wards
Helping you move forwards



Main features

- Victorian terraced house with separate bedrooms
- Versatile accommodation laid out over 3 floors
- Situated within walking distance of Gillingham High Street & station
- Gas central heating and double glazing
- Chain free

Accommodation

GROUND FLOOR

Entrance Hall

Bedroom 3/Family Room: 10'0 x 8'0 at narrowest point (3.05m x 2.44m)

Shower Room

Bathroom

LOWER GROUND FLOOR

Lounge: 13'7 x 11'6 (4.14m x 3.51m)

Kitchen/Dining Area: 23'1 x 13'1 (7.04m x 3.99m)

SPLIT LEVEL FIRST FLOOR

Landing

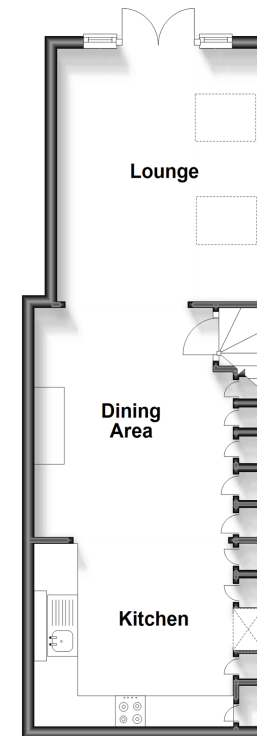
Bedroom 1: 12'10 x 10'8 (3.91m x 3.25m)

Bedroom 2: 11'8 x 10'8 (3.56m x 3.25m)

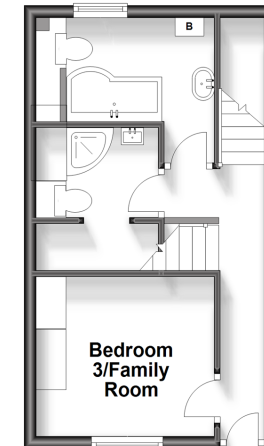
OUTSIDE

Rear Garden

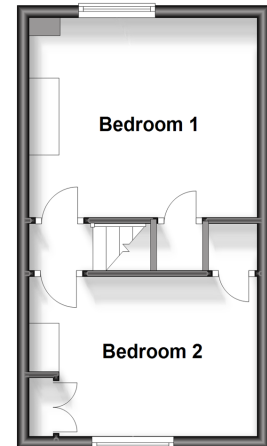
Lower Ground Floor
Approx. 40.4 sq. metres (434.5 sq. feet)



Ground Floor
Approx. 25.9 sq. metres (278.9 sq. feet)



Split Level First Floor
Approx. 25.9 sq. metres (278.9 sq. feet)



Call Gillingham - 01634 851191 ■ wardsforkent.co.uk

- Legal advice should be taken to verify fixtures/fittings, planning, alterations and/or lease details
- Appliances & services are untested, dimensions are approximate and floor plans are not to scale



10921624/20240327/JS/PR