



Price
£240,000

Freehold

3x  1x  2x 

**Ingram Road,
Gillingham, Kent, ME7**

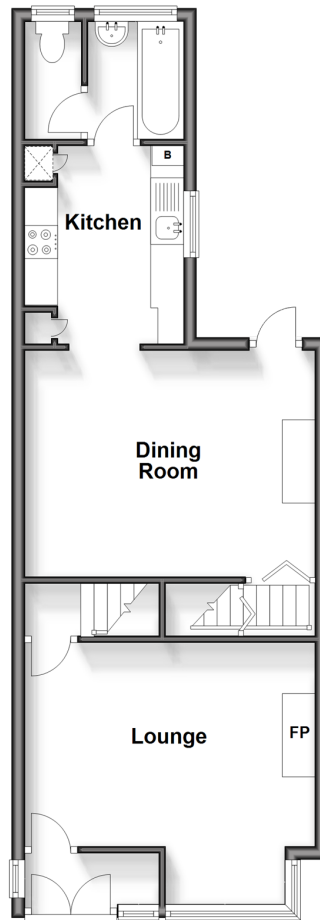
OVER 60?

Secure this property
for up to **59% less!**

Wards
Helping you move forwards

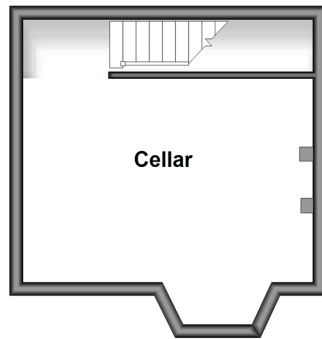
Split Level Ground Floor

Approx. 48.3 sq. metres (519.4 sq. feet)



Basement

Approx. 18.3 sq. metres (196.9 sq. feet)



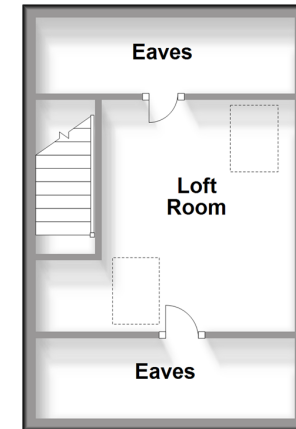
First Floor

Approx. 40.3 sq. metres (433.9 sq. feet)



Second Floor

Approx. 23.7 sq. metres (255.1 sq. feet)



Accommodation

GROUND FLOOR

Lounge: 14'0 x 13'0 (4.27m x 3.97m)
Dining Room: 14'10 x 12'0 (4.52m x 3.66m)
Kitchen: 9'0 x 7'1 (2.75m x 2.16m)
Bathroom
Separate Toilet

BASEMENT

Cellar: 14'1 x 13'0 (4.30m x 3.97m)

FIRST FLOOR

Landing
Bedroom 1: 14'0 x 9'11 (4.27m x 3.02m)
Bedroom 2: 12'0 x 11'0 (3.66m x 3.36m)
Bedroom 3 (off of Bedroom 2): 9'0 x 7'11 (2.75m x 2.41m)

SECOND FLOOR

Loft Room: 13'0 x 11'0 (3.97m x 3.36m)

OUTSIDE

Front Garden
Rear Garden



Main features

- 2/3 bedroom Victorian terraced house in a sought after location
- Close to the hospital, local amenities and Gillingham Mainline Station
- Newly fitted kitchen
- Handy cellar
- Gas central heating & double glazing



Nearest Schools

Primary Schools: St Mary's Catholic Primary 0.0 miles, Saxon Way Primary 0.1 miles, Burnt Oak Primary 0.4 miles

Secondary: Robert Napier 0.8 miles, Brompton Academy 0.9 miles, Chatham Grammar School for Girls 1.1 miles

Transport Information

Train Stations: Gillingham 0.3 miles, Chatham 1.8 miles, Rochester 2.1 miles

Address

Ingram Road, Gillingham, Kent, ME7

Directions

For directions to this property please contact us.





Wards
Helping you move forwards

Call Gillingham Branch 01634 851191 ■ wardsofkent.co.uk



■ Legal advice should be taken to verify fixtures/fittings, planning, alterations and/or lease details ■ Appliances & services are untested, dimensions are approximate and floor plans are not to scale
■ Through a Homewise Home For Life Plan people aged 60+ can secure this property for up to 59% less, by purchasing a Lifetime Lease.



10922045/20240411/JS/AC