



**Price**  
**£220,000**

**Freehold**

2x  1x  1x 

**Hewitt Close,  
Gillingham, Kent, ME7**

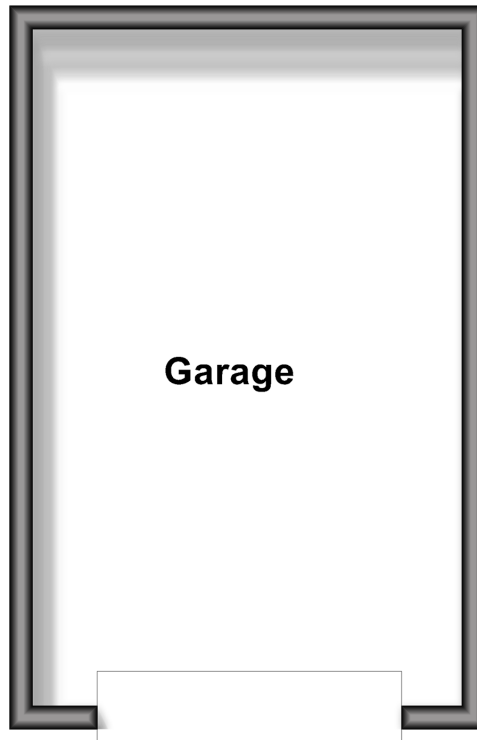
**OVER 60?**

Secure this property  
for up to **59% less!**

*Wards*  
Helping you move forwards

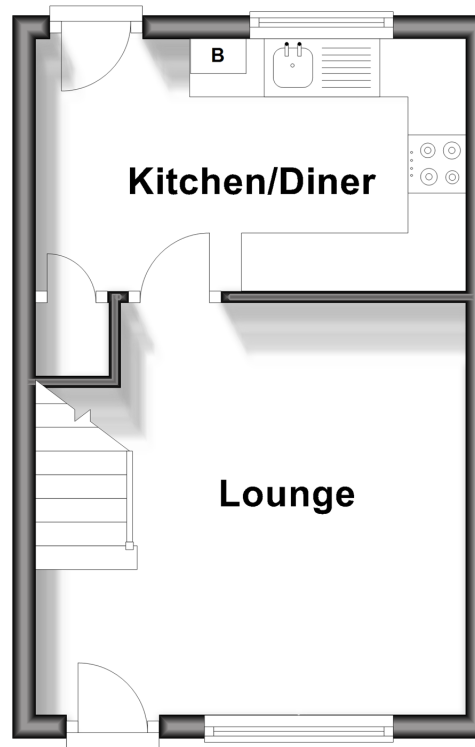
## Ground Floor

Approx. 21.6 sq. metres (233.0 sq. feet)



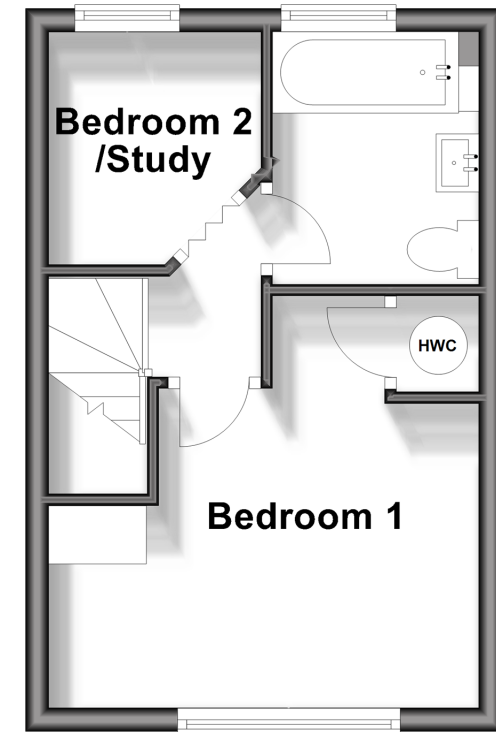
## Upper Ground Floor

Approx. 21.6 sq. metres (233.0 sq. feet)



## First Floor

Approx. 21.6 sq. metres (233.0 sq. feet)



## Accommodation

### GROUND FLOOR

Integral Garage : 19'6 x 12'5 (5.95m x 3.79m)

### UPPER-GROUND FLOOR

Lounge: 12'4 at widest point x 11'10 at widest point (3.76m x 3.61m)

Kitchen/Diner: 12'4 x 7'1 (3.76m x 2.16m)

### FIRST FLOOR

Landing

Bedroom 1 : 12'5 at widest point x 11'10 at widest point (3.79m x 3.61m)

Bathroom

Bedroom 2/Study : 6'7 at widest point x 6'5 at widest point (2.01m x 1.96m)

### OUTSIDE

Driveway

Rear Garden





## Main features

- Relatively modern terraced home
- Large integral garage and driveway
- Gas central heating and double glazing
- Ideal first time buy
- Located on the outskirts of Gillingham in a cul-de-sac position



### Nearest Schools

Primary Schools: Saxon Way Primary 0.5 miles, St Mary's Catholic Primary 0.5 miles, Woodlands Primary 0.6 miles

Secondary Schools & Further Education: The Robert Napier School 0.9 miles, New Brompton College 1.4 miles,



### Transport Information

Train Stations: Gillingham 0.8 miles, Chatham 2.2 miles, Rainham 2.4 miles



### Address

Hewitt Close, Gillingham, Kent, ME7



### Directions

For directions to this property please contact us.





**Wards**  
Helping you move forwards

Call Gillingham Branch 01634 851191 ■ [wardsofkent.co.uk](http://wardsofkent.co.uk)



- Legal advice should be taken to verify fixtures/fittings, planning, alterations and/or lease details
- Appliances & services are untested, dimensions are approximate and floor plans are not to scale
- Through a Homewise Home For Life Plan people aged 60+ can secure this property for up to 59% less, by purchasing a Lifetime Lease.



10923310/20240327/JS/GS