



OVER 60?

Secure this property
for up to **59% less!**

Price

£210,000

Freehold

2x  1x  2x 

**Gardiner Street,
Gillingham, Kent, ME7**

Wards
Helping you move forwards



Main features

- Victorian terraced house - ideal for first time buyers
- Gas central heating and double glazing
- Good sized rear garden
- Useful cellar
- Situated within easy walking distance of Gillingham High Street & Main Line Station

Accommodation

GROUND FLOOR

Dining Room: 11'9 x 9'7 (3.58m x 2.92m)

Lounge: 11'8 x 9'4 (3.56m x 2.85m)

Kitchen: 9'6 x 5'8 (2.90m x 1.73m)

Lobby

Shower Room

BASEMENT

Cellar: 11'8 x 9'4 (3.56m x 2.85m)

FIRST FLOOR

Landing

Bedroom 1: 11'8 x 9'4 (3.56m x 2.85m)

Bedroom 2: 11'9 x 9'7 (3.58m x 2.92m)

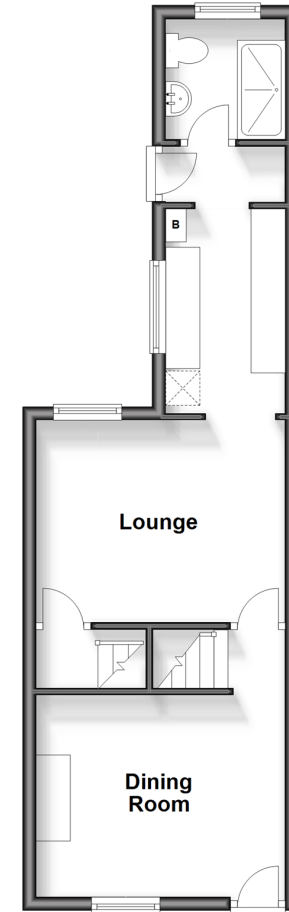
OUTSIDE

Front Garden

Rear Garden

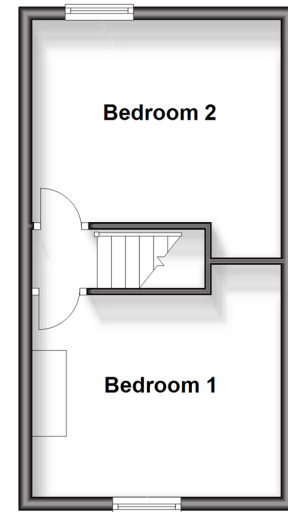
Ground Floor

Approx. 35.4 sq. metres (381.6 sq. feet)



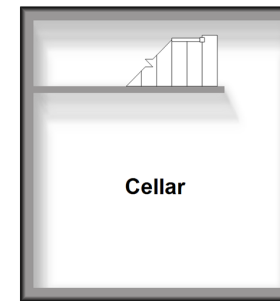
First Floor

Approx. 25.3 sq. metres (271.8 sq. feet)



Basement

Approx. 14.2 sq. metres (152.5 sq. feet)



Call Gillingham - 01634 851191 ■ wardsof Kent.co.uk

- Legal advice should be taken to verify fixtures/fittings, planning, alterations and/or lease details
- Appliances & services are untested, dimensions are approximate and floor plans are not to scale
- Through a Homewise Home For Life Plan people aged 60+ can secure this property for up to 59% less, by purchasing a Lifetime Lease.



10923553/20231120/JS/GS