



OVER 60?

Secure this property
for up to **59% less!**

Price

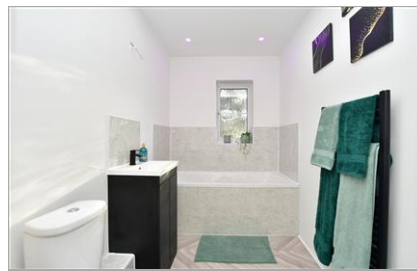
£205,000

Leasehold

2x  2x  1x 

**Stanley Court,
Gillingham, Kent, ME7**

Wards
Helping you move forwards



Main features

- **Spacious first floor purpose built flat with park views**
- **Long lease**
- **1 allocated parking space**
- **New bathroom and en-suite shower room**
- **Situated on the outskirts of Gillingham within a small modern development**

Accommodation

FIRST FLOOR

Hallway

Lounge/Diner: 13'5 x 12'3 (4.09m x 3.74m) plus 8'9 x 8'1 (2.67m x 2.47m)

Kitchen: 8'1 x 8'1 (2.47m x 2.47m)

Bedroom 1: 12'4 at widest point (3.76m) narrowing to 10'0 (3.05m) x 9'7 (2.92m)

En-Suite Shower Room

Bedroom 2: 9'7 x 8'0 (2.92m x 2.44m)

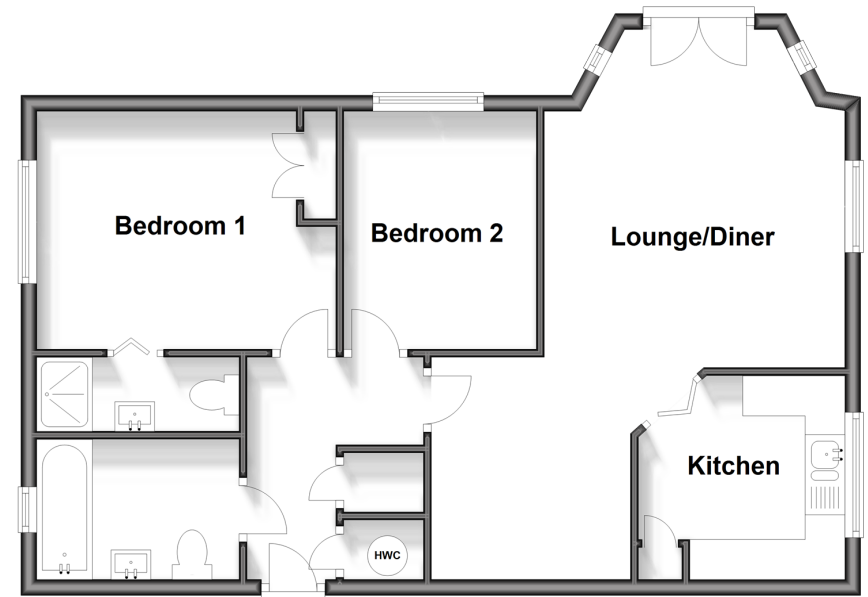
Bathroom

OUTSIDE

Allocated Parking Space

First Floor

Approx. 61.9 sq. metres (665.9 sq. feet)



Call Gillingham - 01634 851191 ■ wardsofkent.co.uk

■ Legal advice should be taken to verify fixtures/fittings, planning, alterations and/or lease details
 ■ Through a Homewise Home For Life Plan people aged 60+ can secure this property for up to 59% less, by purchasing a Lifetime Lease.

■ Appliances & services are untested, dimensions are approximate and floor plans are not to scale



10924629/20240215/JS/GS