

Price
£250,000

Freehold

3x  1x  2x 

**Beresford Road,
Gillingham, Kent, ME7**

OVER 60?

Secure this property
for up to **59% less!**

Wards
Helping you move forwards



Main features

- Victorian terraced house with third bedroom off the second
- Ideal for first time buyers
- Spacious rooms in a great condition
- Gas central heating and double glazing
- Near to Gillingham High Street and Mainline Station

Accommodation

SPLIT LEVEL GROUND FLOOR

Lounge: 11'11 into bay x 9'11 (3.63m x 3.02m)

Dining Room: 11'3 x 10'0 (3.43m x 3.05m)

Kitchen: 11'1 x 8'10 (3.38m x 2.69m)

Bathroom

SPLIT LEVEL FIRST FLOOR

Landing

Bedroom 1: 11'1 x 10'2 (3.38m x 3.10m)

Bedroom 2: 11'3 x 10'0 (3.43m x 3.05m)

Bedroom 3 (Off Bedroom 2): 8'6 x 7'6 (2.59m x 2.29m)

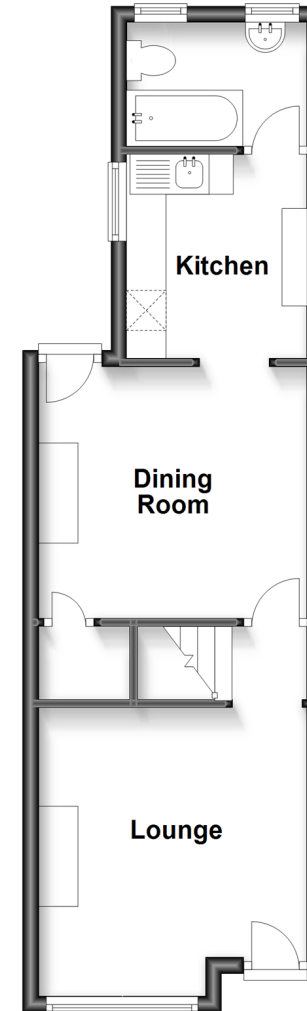
OUTSIDE

Front Garden

Rear Garden

Split Level Ground Floor

Approx. 35.9 sq. metres (386.7 sq. feet)



Split Level First Floor

Approx. 31.1 sq. metres (335.1 sq. feet)



Call Gillingham - 01634 851191 ■ wardsof Kent.co.uk

- Legal advice should be taken to verify fixtures/fittings, planning, alterations and/or lease details
- Appliances & services are untested, dimensions are approximate and floor plans are not to scale
- Through a Homewise Home For Life Plan people aged 60+ can secure this property for up to 59% less, by purchasing a Lifetime Lease.



10924843/20230104/JS/NJ