



Price

£285,000

Leasehold

2x  2x  1x 

**The Peninsula, Pegasus
Way, Gillingham, Kent,
ME7**

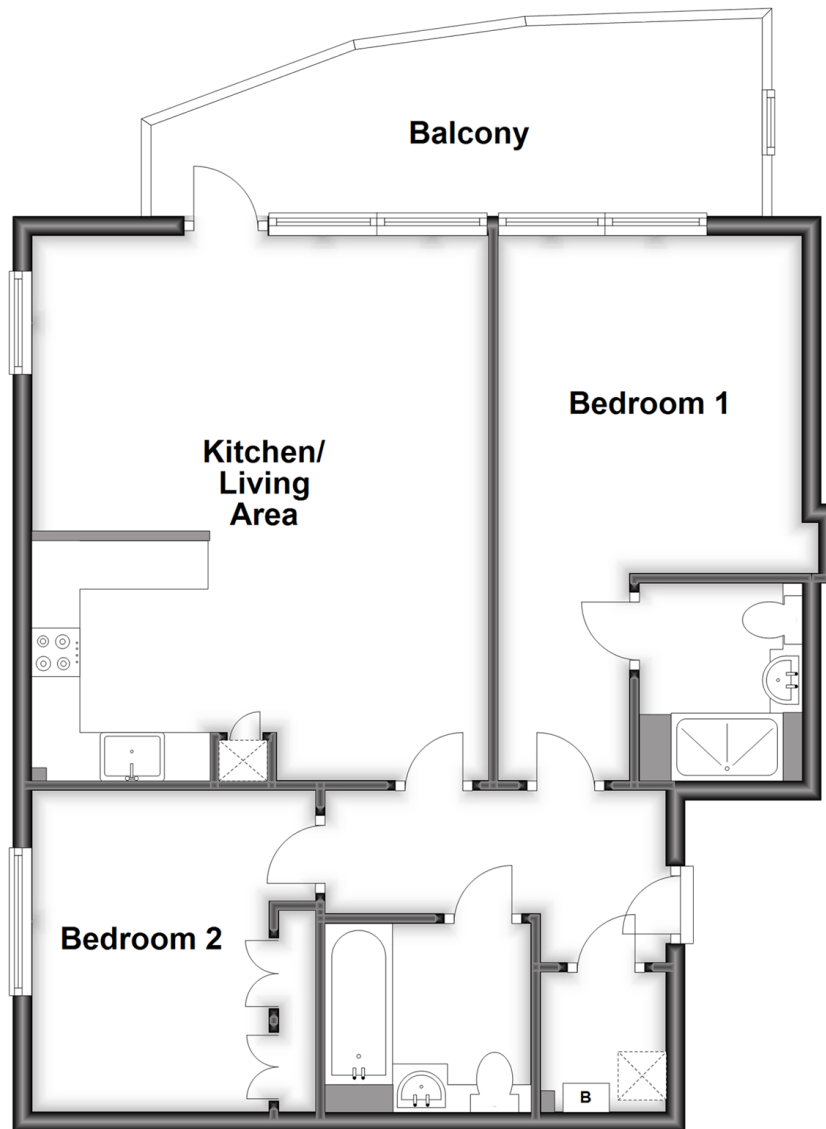
OVER 60?

Secure this property
for up to **59% less!**

Wards
Helping you move forwards

Fourth Floor

Approx. 67.6 sq. metres (727.3 sq. feet)



Accommodation

FOURTH FLOOR

Entrance Hall

Bathroom

Kitchen/Living Area: 19'4 x 15'7 (5.90m x 4.75m)

Balcony

Bedroom 1: 11'5 x 10'5 (3.48m x 3.18m)

En-Suite Shower Room

Bedroom 2: 10'10 x 10'0 (3.30m x 3.05m)

OUTSIDE

Allocated Parking



Main features

- **Luxury fourth floor riverside apartment with panoramic river views**
- **Bathroom and en-suite shower room**
- **Allocated parking**
- **Excellent road access**
- **Stunning development located on the outskirts of Gillingham**
- **Current owner has had a water cooled air conditioning system installed**



Nearest Schools

Primary Schools: Burnt Oak Primary 0.4 miles, Saxon Way Primary 0.4 miles, St Mary's Catholic Primary 0.6 miles
Secondary Schools: Brompton Academy 1.2 miles, The Robert Napier School 1.4 miles, The Hundred of Hoo Comprehensive School 1.6 miles



Transport Information

Train Stations: Gillingham 0.7 miles, Chatham 1.9 miles, Rochester 2.1 miles



Address

The Peninsula, Pegasus Way, Gillingham, Kent, ME7



Directions

For directions to this property please contact us.



Call Gillingham Branch 01634 851191 ■ wardsofkent.co.uk



- Legal advice should be taken to verify fixtures/fittings, planning, alterations and/or lease details
- Appliances & services are untested, dimensions are approximate and floor plans are not to scale
- Through a Homewise Home For Life Plan people aged 60+ can secure this property for up to 59% less, by purchasing a Lifetime Lease.



10925704/20230807/JS/GS