



OVER 60?

Secure this property
for up to **59% less!**

Price

£220,000

Freehold

2x  1x  2x 

**West Street, Gillingham,
Kent, ME7**

Wards
Helping you move forwards



Main features

- Mid-terraced house
- Ideal investment opportunity or first time buy
- A short distance from Gillingham High Street & Mainline Station
- Double glazing & central heating
- Chain free

Accommodation

SPLIT LEVEL GROUND FLOOR

Lounge: 11'11 x 9'7 (3.63m x 2.92m)

Dining Room: 11'6 x 10'1 (3.51m x 3.08m)

Kitchen: 6'6 x 6'6 (1.98m x 1.98m)

BASEMENT

Cellar

SPLIT LEVEL FIRST FLOOR

LANDING

Bedroom 1: 11'6 x 9'8 (3.51m x 2.95m)

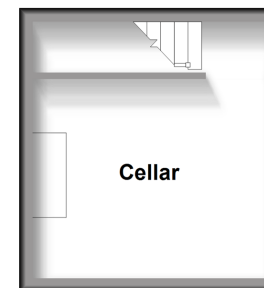
Bedroom 2: 11'4 x 10'1 (3.46m x 3.08m)

Bathroom (off of Bedroom 2)

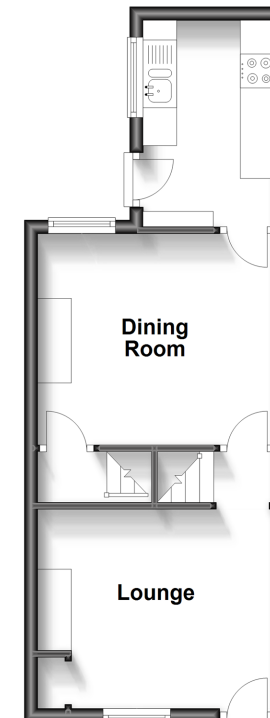
OUTSIDE

Rear Garden

Basement
Approx. 13.3 sq. metres (143.2 sq. feet)



Split Level Ground Floor
Approx. 30.7 sq. metres (330.9 sq. feet)



Split Level First Floor
Approx. 30.7 sq. metres (330.9 sq. feet)



Call Gillingham - 01634 851191 ■ wardsof Kent.co.uk

- Legal advice should be taken to verify fixtures/fittings, planning, alterations and/or lease details
- Appliances & services are untested, dimensions are approximate and floor plans are not to scale
- Through a Homewise Home For Life Plan people aged 60+ can secure this property for up to 59% less, by purchasing a Lifetime Lease.



10926350/20230524/JS/NJ