



OVER 60?

Secure this property
for up to **59% less!**

Price

£255,000

Leasehold

2x  1x  1x 

**Peninsula Quay, Pegasus
Way, Gillingham, Kent,
ME7**

Wards
Helping you move forwards



Main features

- Fourth floor apartment with balcony
- Secured underground parking
- Well presented throughout
- Situated on a beautiful waterside development with stunning river views
- Walking distance of Gillingham High Street & Station with excellent road access

Accommodation

FOURTH FLOOR

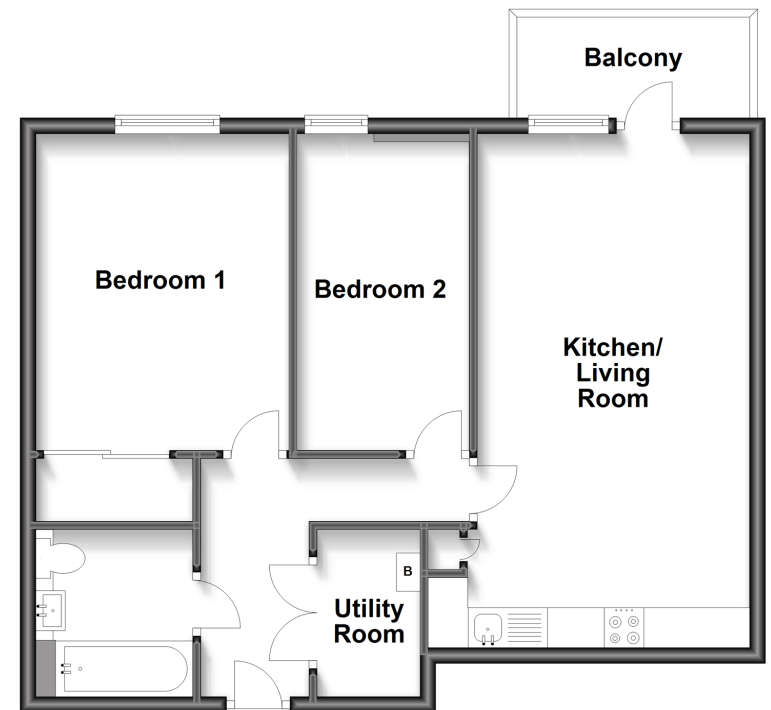
Entrance Hall
 Utility Room
 Kitchen/Living Room: 21'4 x 11'3 (6.51m x 3.43m)
 Balcony
 Bedroom 1: 12'10 x 10'5 (3.91m x 3.18m)
 Bedroom 2: 12'9 x 7'1 (3.89m x 2.16m)
 Bathroom

OUTSIDE

Secured Underground Parking

Fourth Floor

Approx. 61.0 sq. metres (656.6 sq. feet)



Call Gillingham - 01634 851191 ■ wardsofkent.co.uk

■ Legal advice should be taken to verify fixtures/fittings, planning, alterations and/or lease details
 ■ Through a Homewise Home For Life Plan people aged 60+ can secure this property for up to 59% less, by purchasing a Lifetime Lease.

■ Appliances & services are untested, dimensions are approximate and floor plans are not to scale



10926505/20221124/JS/GS