



**Price**  
**£230,000**

**Freehold**

3x  1x  1x 

**Gillingham Road,  
Gillingham, Kent, ME7**

**OVER 60?**

Secure this property  
for up to **59% less!**

*Wards*  
Helping you move forwards





## Main features

- **2/3 bedroom Victorian terraced house - ideal for first time buyers**
- **Modern fitted kitchen**
- **Gas central heating and double glazing**
- **Useful cellar**
- **Situated within walking distance of Gillingham High Street & Mainline Station**

## Accommodation

### GROUND FLOOR

Lounge: 11'7 x 9'7 (3.53m x 2.92m)  
 Dining Area: 11'7 x 9'8 (3.53m x 2.95m)  
 Kitchen: 9'2 x 9'0 (2.80m x 2.75m)  
 Lobby  
 Bathroom

### BASEMENT

Cellar Room: 11'7 x 9'7 (3.53m x 2.92m)

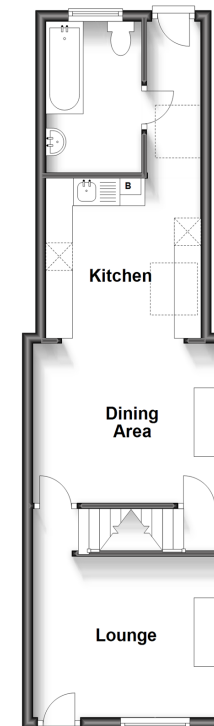
### SPLIT LEVEL FIRST FLOOR

Landing  
 Bedroom 1: 11'7 x 8'11 (3.53m x 2.72m)  
 Bedroom 2: 11'7 x 9'5 (3.53m x 2.87m)  
 Bedroom 3 (off of Bedroom 2): 9'0 x 5'4 (2.75m x 1.63m)

### OUTSIDE

Front Courtyard  
 Rear Garden

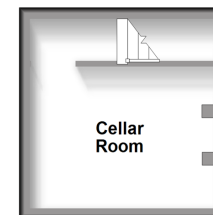
**Ground Floor**  
 Approx. 41.1 sq. metres (442.3 sq. feet)



**Split Level First Floor**  
 Approx. 28.7 sq. metres (309.4 sq. feet)



**Basement**  
 Approx. 12.2 sq. metres (131.2 sq. feet)



**Call Gillingham - 01634 851191 ■ [wardsofkent.co.uk](http://wardsofkent.co.uk)**

■ Legal advice should be taken to verify fixtures/fittings, planning, alterations and/or lease details  
 ■ Through a Homewise Home For Life Plan people aged 60+ can secure this property for up to 59% less, by purchasing a Lifetime Lease.

■ Appliances & services are untested, dimensions are approximate and floor plans are not to scale



10926661/20230509/JS/GS