



OVER 60?

Secure this property
for up to **59% less!**

Price

£280,000

Freehold

3x  1x  1x 

**Windmill Road,
Gillingham, Kent, ME7**

Wards
Helping you move forwards



Main features

- **Spacious, well presented terraced house with separate bedrooms**
- **Modern downstairs bathroom and upstairs cloakroom**
- **Fitted gloss finish kitchen**
- **Useful utility room**
- **Ideal first time buy**
- **Within walking distance of Medway Maritime Hospital, Gillingham High Street & Station**

Accommodation

GROUND FLOOR

Hallway

Lounge/Diner: 27'5 (8.36m) x 14'0 at widest point (4.27m) narrowing to 11'0 (3.36m)

Kitchen: 11'10 x 8'1 (3.61m x 2.47m)

Utility Room: 8'1 x 6'0 (2.47m x 1.83m)

Bathroom

BASEMENT

Cellar

SPLIT LEVEL FIRST FLOOR

Landing

Bedroom 1: 14'4 x 12'0 (4.37m x 3.66m)

Bedroom 2: 12'0 x 8'2 (3.66m x 2.49m)

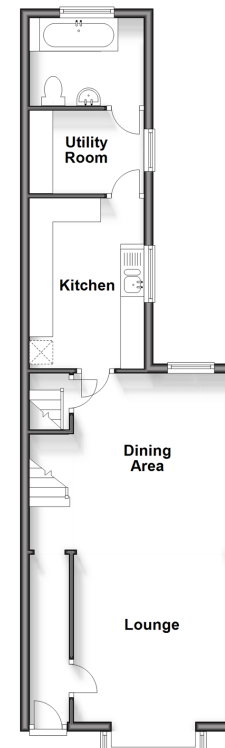
Bedroom 3: 10'0 x 8'2 (3.05m x 2.49m)

OUTSIDE

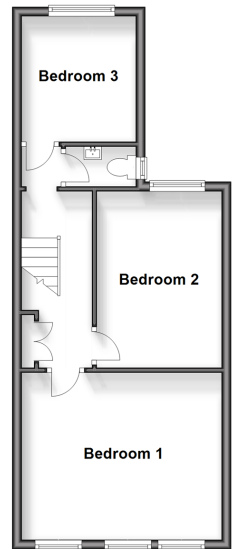
Front Garden

Rear Garden

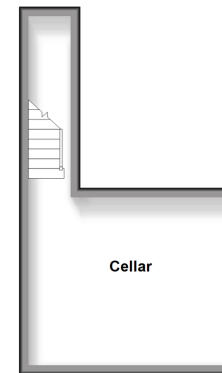
Ground Floor
Approx. 50.4 sq. metres (542.9 sq. feet)



Split Level First Floor
Approx. 40.6 sq. metres (437.4 sq. feet)



Basement
Approx. 18.6 sq. metres (200.2 sq. feet)



Call Gillingham - 01634 851191 ■ wardsofkent.co.uk

■ Legal advice should be taken to verify fixtures/fittings, planning, alterations and/or lease details
■ Through a Homewise Home For Life Plan people aged 60+ can secure this property for up to 59% less, by purchasing a Lifetime Lease.

■ Appliances & services are untested, dimensions are approximate and floor plans are not to scale



10926723/20231116/JS/GS