



OVER 60?

Secure this property
for up to **59% less!**

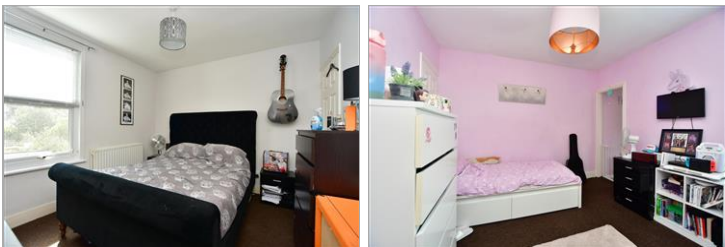
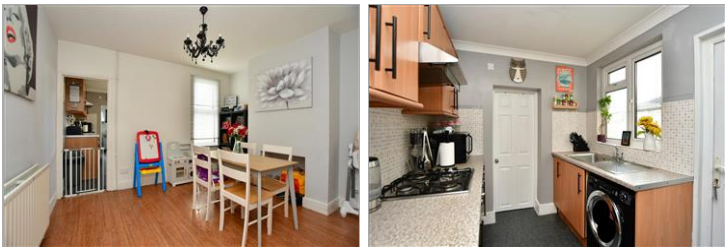
Price
£250,000

Freehold

3x  1x  2x 

**Cowper Road,
Gillingham, Kent, ME7**

Wards
Helping you move forwards



Main features

- 2/3 bedroom Victorian terraced house - ideal first time buy
- Modern kitchen & bathroom
- Popular Poet's Corner location
- Situated close to amenities & excellent road access
- Gas central heating & double glazing

Accommodation

GROUND FLOOR

Lounge: 12'0 into bay x 11'9 (3.66m x 3.58m)

Dining Room: 12'2 x 10'4 (3.71m x 3.15m)

Kitchen: 9'5 x 7'6 (2.87m x 2.29m)

Bathroom

SPLIT LEVEL FIRST FLOOR

Landing

Bedroom 1: 12'2 x 10'3 (3.71m x 3.13m)

Bedroom 2: 12'1 x 10'4 (3.69m x 3.15m)

Bedroom 3 (off of Bedroom 2): 9'3 x 7'2 (2.82m x 2.19m)

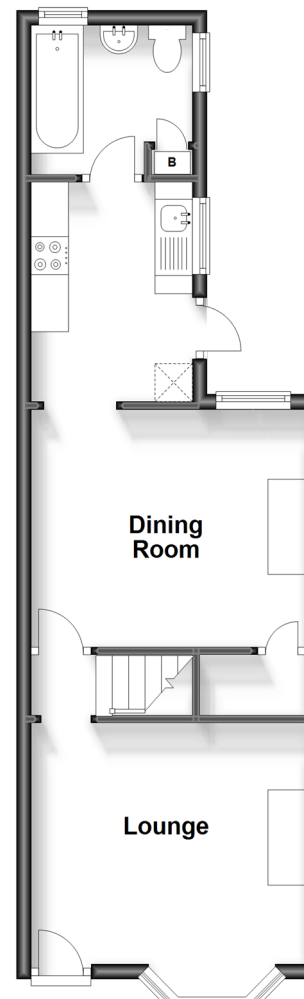
OUTSIDE

Front Garden

Rear Garden

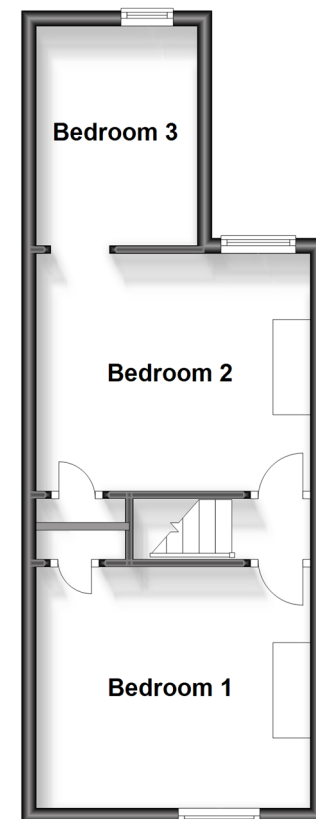
Ground Floor

Approx. 37.8 sq. metres (407.0 sq. feet)



Split Level First Floor

Approx. 33.2 sq. metres (357.1 sq. feet)



Call Gillingham - 01634 851191 ■ wardsofkent.co.uk

- Legal advice should be taken to verify fixtures/fittings, planning, alterations and/or lease details
- Appliances & services are untested, dimensions are approximate and floor plans are not to scale
- Through a Homewise Home For Life Plan people aged 60+ can secure this property for up to 59% less, by purchasing a Lifetime Lease.



10926738/20230803/JS/GS