



OVER 60?

Secure this property
for up to **59% less!**

Price

£425,000

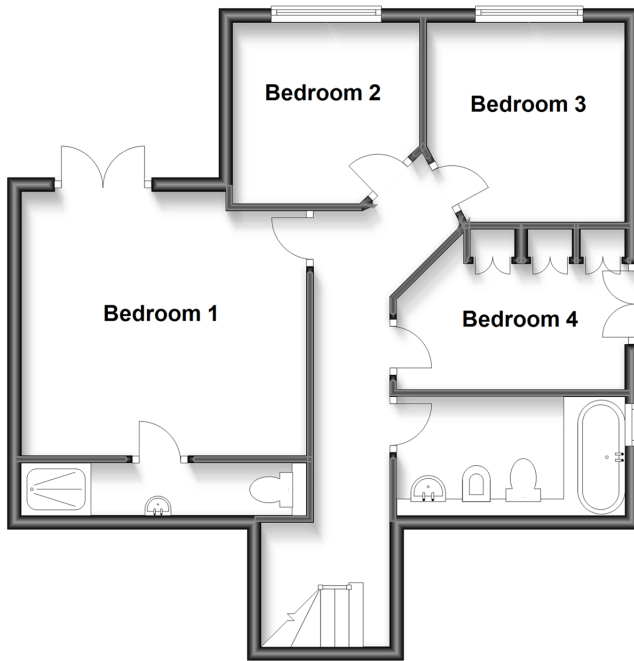
Freehold

4x  2x  2x 

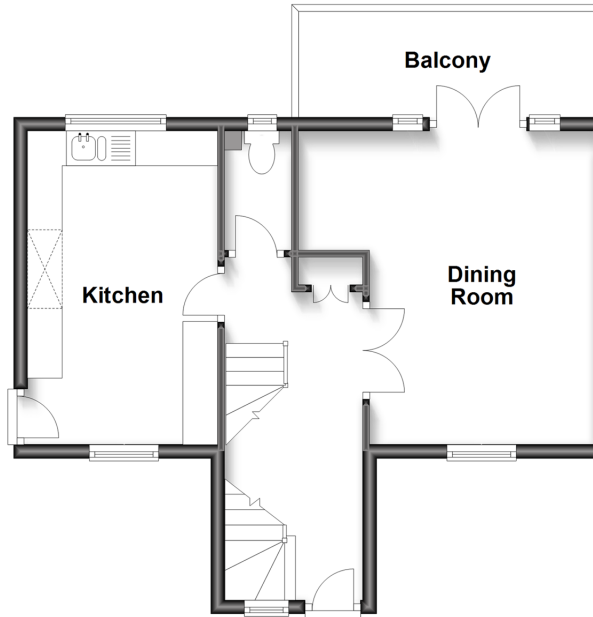
**Longhill Avenue,
Chatham, Kent, ME5**

Wards
Helping you move forwards

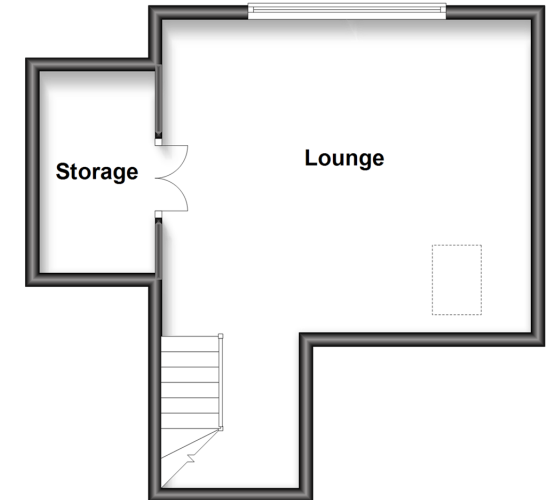
Lower Ground Floor
Approx. 57.9 sq. metres (622.8 sq. feet)



Ground Floor
Approx. 41.3 sq. metres (444.6 sq. feet)



First Floor
Approx. 33.6 sq. metres (361.6 sq. feet)



Accommodation

GROUND FLOOR

Hallway
Separate Toilet
Kitchen: 14'9 x 10'0 (4.50m x 3.05m)
Dining Room: 15'1 x 10'6 (4.60m x 3.20m)
Balcony

LOWER GROUND FLOOR

Landing
Bathroom
Bedroom 1: 13'7 x 12'1 (4.14m x 3.69m)
En-Suite Shower Room
Bedroom 2: 10'0 x 9'5 (3.05m x 2.87m)
Bedroom 3: 9'5 x 9'0 (2.87m x 2.75m)
Bedroom 4: 10'5 x 8'4 (3.18m x 2.54m)

FIRST FLOOR

Lounge: 19'10 x 15'3 (6.05m x 4.65m)

OUTSIDE

Front Garden
Rear Garden
Summer House: 12'5 x 8'8 (3.79m x 2.64m)
Off Road Parking



Main features

- Unique detached house with stunning views - making a great family home
- Good size plot with summer house
- Separate toilet, en-suite and bathroom
- Off-road parking for 2 cars
- Versatile accommodation laid out over three floors



Nearest Schools

Primary Schools: All Saints C of E Primary, Chatham 0.1 miles, New Road School and Nursery Unit 0.3 miles
 Secondary Schools: Brompton Academy 0.3 miles, Chatham Grammar School for Girls 0.5 miles, Victory Academy 0.6 miles

Transport Information

Train Stations: Gillingham 1.3 miles, Chatham 2.3 miles, Rochester 2.5 miles

Address

Longhill Avenue, Chatham, Kent, ME5

Directions

For directions to this property please contact us.



Call Gillingham Branch 01634 851191 ■ wardsofkent.co.uk



- Legal advice should be taken to verify fixtures/fittings, planning, alterations and/or lease details
- Appliances & services are untested, dimensions are approximate and floor plans are not to scale
- Through a Homewise Home For Life Plan people aged 60+ can secure this property for up to 59% less, by purchasing a Lifetime Lease.



10926785/20230418/GS/GS