



OVER 60?

Secure this property
for up to **59% less!**

Price

£160,000

Leasehold

1x  1x  1x 

**Richmond Road,
Gillingham, Kent, ME7**

Wards
Helping you move forwards



Main features

- **Spacious maisonette with loft room proving additional space**
- **Long lease and low service charge; currently £375 per annum**
- **Equal share in the Rights to Manage company included with the purchase**
- **Rear access to half the garden**
- **Electric central heating and double glazing**

Accommodation

SPLIT LEVEL FIRST FLOOR

Hallway

Lounge: 13'7 x 13'5 into bay (4.14m x 4.09m)

Bedroom : 8'4 x 8'0 (2.54m x 2.44m)

Kitchen: 10'6 x 8'5 (3.20m x 2.57m)

Bathroom

SECOND FLOOR

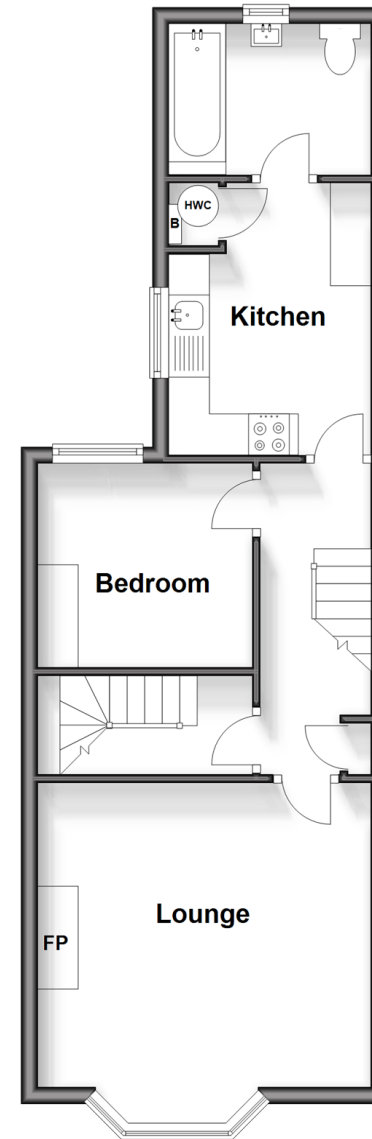
Loft Room : 14'4 x 12'3 (4.37m x 3.74m)

OUTSIDE

Rear Access to a Portion of the Rear Garden

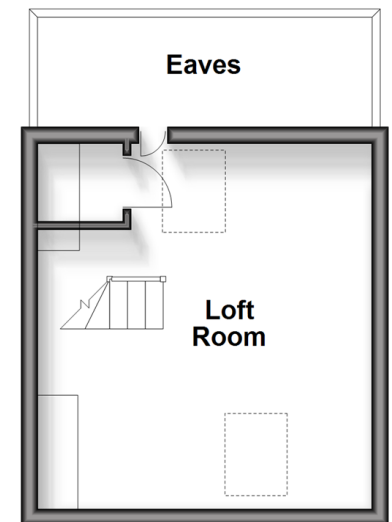
Split Level First Floor

Approx. 44.6 sq. metres (480.1 sq. feet)



Second Floor

Approx. 18.2 sq. metres (195.8 sq. feet)



Call Gillingham - 01634 851191 ■ wardsofkent.co.uk

- Legal advice should be taken to verify fixtures/fittings, planning, alterations and/or lease details
- Appliances & services are untested, dimensions are approximate and floor plans are not to scale
- Through a Homewise Home For Life Plan people aged 60+ can secure this property for up to 59% less, by purchasing a Lifetime Lease.



10926863/20240209/JS/GS