



**OVER 60?**

Secure this property  
for up to **59% less!**

**Price**

**£250,000**

**Freehold**

3x  1x  1x 

**Glanville Road,  
Gillingham, Kent, ME7**

*Wards*  
Helping you move forwards



## Main features

- 2/3 bedroom end of terrace Victorian house situated in a cul-de-sac position
- Modern kitchen & bathroom
- Ideal first time buy
- Gas central heating & double glazing
- Within walking distance of Gillingham High Street & Mainline Station

## Accommodation

### GROUND FLOOR

Lounge: 11'9 x 10'2 (3.58m x 3.10m)

Inner Hallway

Dining Room: 12'2 x 10'10 (3.71m x 3.30m)

Kitchen: 8'4 x 7'0 (2.54m x 2.14m)

Bathroom

### FIRST FLOOR

Landing

Bedroom 1: 12'3 x 10'1 (3.74m x 3.08m)

Bedroom 2: 12'2 x 10'2 (3.71m x 3.10m)

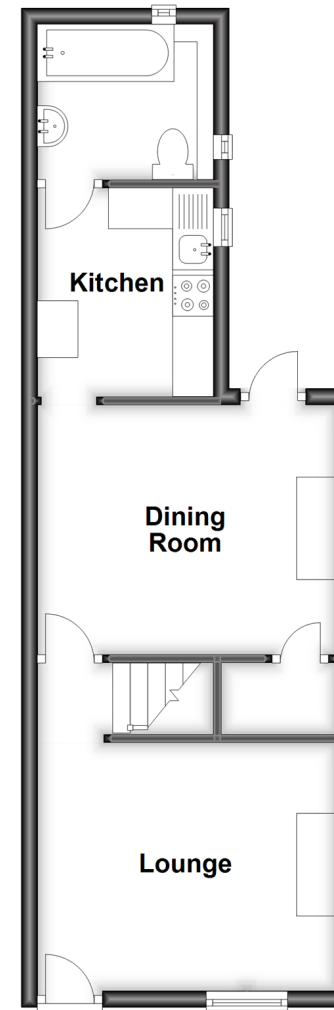
Bedroom 3 (Off of Bedroom 2): 15'11 x 7'2 (4.85m x 2.19m)

### OUTSIDE

Rear Garden

### Ground Floor

Approx. 36.4 sq. metres (391.9 sq. feet)



### First Floor

Approx. 36.4 sq. metres (391.9 sq. feet)



**Call Gillingham - 01634 851191 ■ [wardsof Kent.co.uk](http://wardsof Kent.co.uk)**

- Legal advice should be taken to verify fixtures/fittings, planning, alterations and/or lease details
- Appliances & services are untested, dimensions are approximate and floor plans are not to scale
- Through a Homewise Home For Life Plan people aged 60+ can secure this property for up to 59% less, by purchasing a Lifetime Lease.



10926864/20240306/JS/GS