



OVER 60?

Secure this property
for up to **59% less!**

Price

£220,000

Freehold

3x  1x  2x 

**Milton Road, Gillingham,
Kent, ME7**

Wards
Helping you move forwards



Main features

- 2/3 bedroom Victorian terraced house - ideal for first time buyers
- Modern fitted kitchen
- Separate dining room and lounge
- Gas central heating and double glazing
- Situated in Upper Gillingham in the popular area of Poet's Corner

Accommodation

GROUND FLOOR

Porch

Lounge: 12'2 into bay x 12'2 (3.71m x 3.71m)

Inner Hallway

Dining Room: 12'2 x 9'8 (3.71m x 2.95m)

Kitchen: 9'0 x 7'4 (2.75m x 2.24m)

Lobby

Bathroom

FIRST FLOOR

Landing

Bedroom 1: 12'2 x 10'10 (3.71m x 3.30m)

Bedroom 2: 12'3 x 10'7 (3.74m x 3.23m)

Bedroom 3 (off of Bedroom 2): 9'1 x 7'5 (2.77m x 2.26m)

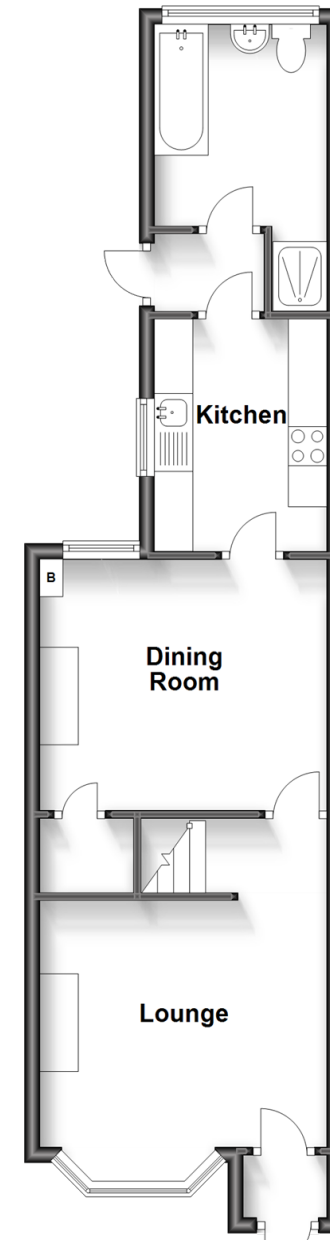
OUTSIDE

Front Garden

Rear Garden

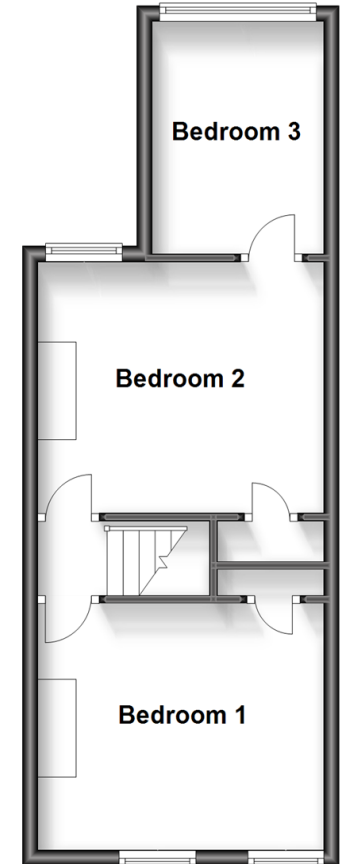
Ground Floor

Approx. 480.8 sq. feet



First Floor

Approx. 376.6 sq. feet



Call Gillingham - 01634 851191 ■ wardsofkent.co.uk

- Legal advice should be taken to verify fixtures/fittings, planning, alterations and/or lease details
- Appliances & services are untested, dimensions are approximate and floor plans are not to scale
- Through a Homewise Home For Life Plan people aged 60+ can secure this property for up to 59% less, by purchasing a Lifetime Lease.



10926905/20230821/JS/GS