



**Price**  
**£375,000**

**Freehold**

3x  2x  1x 

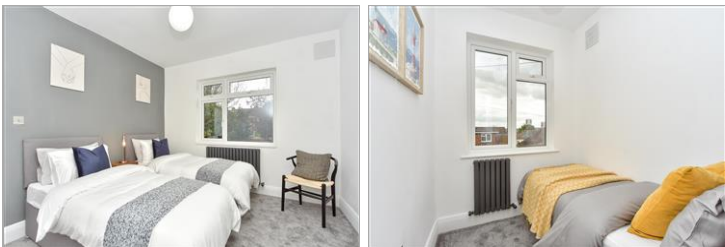
**St. Andrew's Road,  
Gillingham, Kent, ME7**

**OVER 60?**

Secure this property  
for up to **59% less!**

*Wards*  
Helping you move forwards





## Main features

- Immaculately presented semi-detached house
- Handy downstairs shower room
- Newly fitted kitchen and bathroom
- Great size driveway with a detached garage
- Walking distance to Gillingham High Street and mainline station

## Accommodation

### GROUND FLOOR

Hallway  
Lounge: 14'8 into bay x 11'1 (4.47m x 3.38m)  
Shower Room  
Kitchen/Diner: 17'6 x 12'0 (5.34m x 3.66m)

### FIRST FLOOR

Landing  
Bedroom 1: 14'7 into bay x 10'7 (4.45m x 3.23m)  
Bedroom 2: 12'1 x 10'4 (3.69m x 3.15m)  
Bathroom  
Bedroom 3: 7'2 x 5'9 (2.19m x 1.75m)

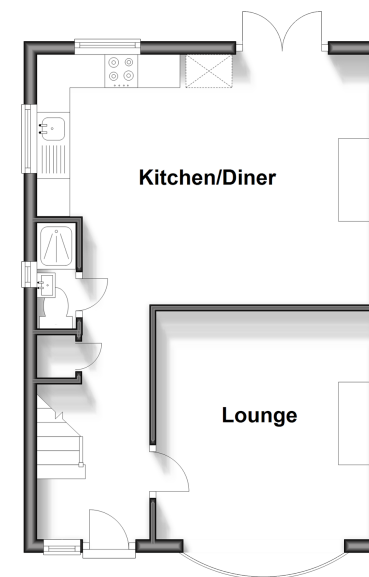
### OUT BUILDING

Detached Garage

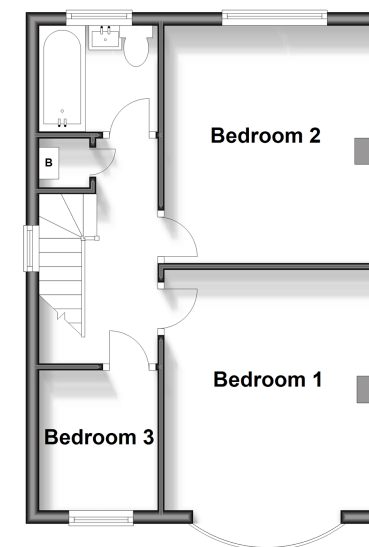
### OUTSIDE

Front Garden  
Off-Road Parking  
Rear Garden

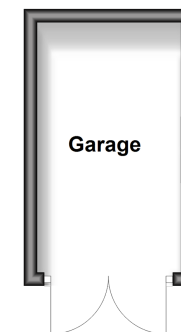
**Ground Floor**  
Approx. 37.5 sq. metres (404.1 sq. feet)



**First Floor**  
Approx. 37.5 sq. metres (403.8 sq. feet)



**Outbuilding**  
Approx. 8.2 sq. metres (88.6 sq. feet)



**Call Gillingham - 01634 851191 ■ [wardsofkent.co.uk](http://wardsofkent.co.uk)**

- Legal advice should be taken to verify fixtures/fittings, planning, alterations and/or lease details
- Appliances & services are untested, dimensions are approximate and floor plans are not to scale
- Through a Homewise Home For Life Plan people aged 60+ can secure this property for up to 59% less, by purchasing a Lifetime Lease.



10926929/20240424/JS/AC