



**OVER 60?**

Secure this property  
for up to **59% less!**

**Price**

**£270,000**

**Freehold**

3x  1x  1x 

**Copenhagen Road,  
Gillingham, Kent, ME7**

*Wards*  
Helping you move forwards





## Main features

- Victorian 2/3 bedroom terraced home in a sought after location
- Great sized rooms for a young family to get on the property ladder
- Gas central heating & double glazing
- Handy cellar rooms
- Within walking distance to Gillingham High Street & Mainline Station

## Accommodation

### SPLIT LEVEL GROUND FLOOR

Lounge: 12'0 x 10'0 (3.66m x 3.05m)  
 Inner Hallway  
 Kitchen/Diner: 12'0 x 10'0 (3.66m x 3.05m)  
 Utility Room: 11'0 x 6'11 (3.36m x 2.11m)  
 Bathroom

### LOWER GROUND FLOOR

Cellar Room 1: 11'11 x 10'1 (3.63m x 3.08m)  
 Cellar Room 2: 11'0 x 10'0 (3.36m x 3.05m)

### SPLIT LEVEL FIRST FLOOR

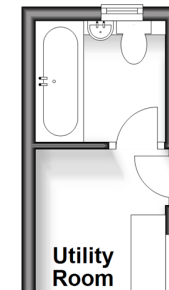
Landing  
 Bedroom 2: 12'0 x 10'0 (3.66m x 3.05m)  
 Bedroom 1: 12'0 x 11'0 (3.66m x 3.36m)  
 Bedroom 3 (off of Bedroom 1): 10'0 x 6'11 (3.05m x 2.11m)

### OUTSIDE

Front Garden  
 Rear Garden

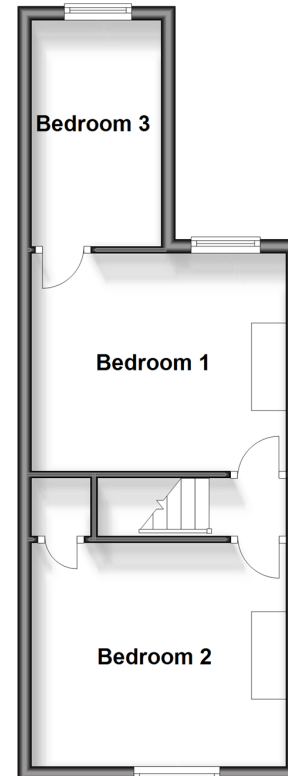
### Split Level Ground Floor

Approx. 36.7 sq. metres (395.4 sq. feet)



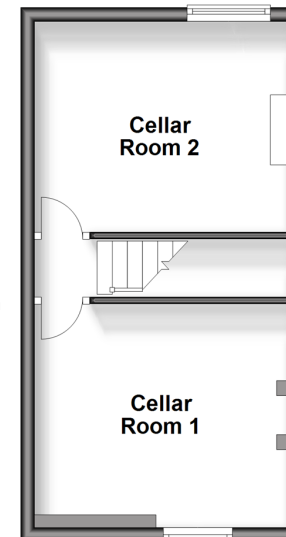
### Split Level First Floor

Approx. 33.3 sq. metres (358.3 sq. feet)



### Lower Ground Floor

Approx. 26.6 sq. metres (286.8 sq. feet)



**Call Gillingham - 01634 851191 ■ [wardsof Kent.co.uk](http://wardsof Kent.co.uk)**

- Legal advice should be taken to verify fixtures/fittings, planning, alterations and/or lease details
- Appliances & services are untested, dimensions are approximate and floor plans are not to scale
- Through a Homewise Home For Life Plan people aged 60+ can secure this property for up to 59% less, by purchasing a Lifetime Lease.



10926951/20240411/JS/AC