



OVER 60?

Secure this property
for up to **59% less!**

Price

£285,000

Freehold

2x  1x  1x 

**King Street, Gillingham,
Kent, ME7**

Wards
Helping you move forwards



Main features

- Modern end of terrace house with separate bedrooms & useful loft room
- Within easy walking distance of Gillingham High Street & Station
- Spacious open plan lounge/kitchen
- Beautifully presented and stunning ideal first time buy
- Chain free

Accommodation

SPLIT LEVEL GROUND FLOOR

Hallway
Cloakroom
Kitchen/Lounge: 42'0 x 9'7 (12.81m x 2.92m)

FIRST FLOOR

Landing
Bedroom 1: 17'0 x 9'4 (5.19m x 2.85m)
Bedroom 2: 9'5 x 9'4 (2.87m x 2.85m)
Bathroom

SECOND FLOOR

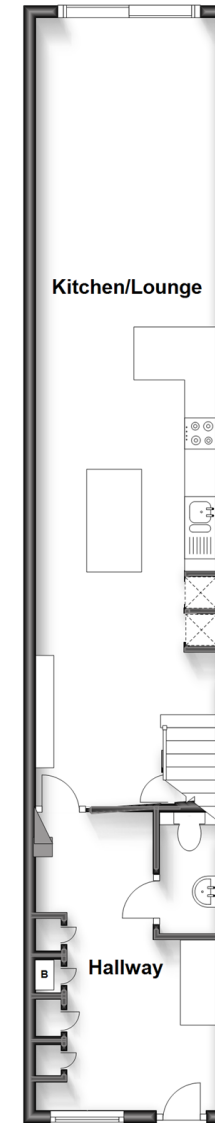
Loft Room: 17'0 x 9'6 (5.19m x 2.90m)

OUTSIDE

Front Garden
Rear Garden

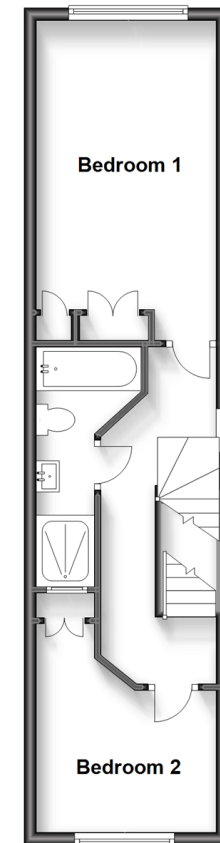
Split Level Ground Floor

Approx. 50.7 sq. metres (545.7 sq. feet)



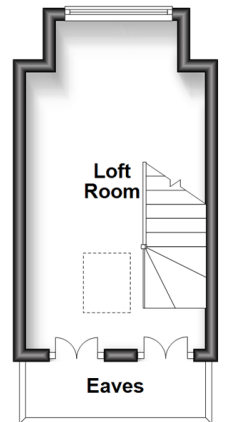
First Floor

Approx. 37.7 sq. metres (405.7 sq. feet)



Second Floor

Approx. 14.5 sq. metres (155.7 sq. feet)



Call Gillingham - 01634 851191 ■ wardsofkent.co.uk

- Legal advice should be taken to verify fixtures/fittings, planning, alterations and/or lease details
- Appliances & services are untested, dimensions are approximate and floor plans are not to scale
- Through a Homewise Home For Life Plan people aged 60+ can secure this property for up to 59% less, by purchasing a Lifetime Lease.



10926960/20230711/JS/GS