



**OVER 60?**

Secure this property  
for up to **59% less!**

**Price**  
**£110,000**

**Freehold**

1x  1x  1x 

**Canterbury Street,  
Gillingham, Kent, ME7**

*Wards*  
Helping you move forwards



## Main features

- Chain free split level converted flat requiring updating
- Gas central heating & double glazing
- Useful cellar
- Off-road parking space to the rear
- Situated in Upper Gillingham with good access to local amenities

## Accommodation

### GROUND FLOOR

Lounge: 14'4 into bay x 9'8 (4.37m x 2.95m)

Hallway

Bedroom: 11'5 x 9'8 (3.48m x 2.95m)

Bathroom

Kitchen: 13'5 x 8'5 (4.09m x 2.57m)

### BASEMENT

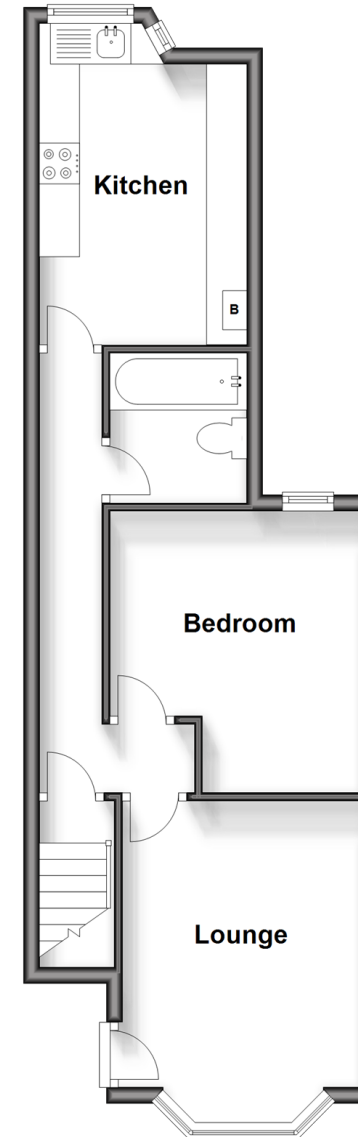
Cellar

### OUTSIDE

Off-Road Parking to Rear

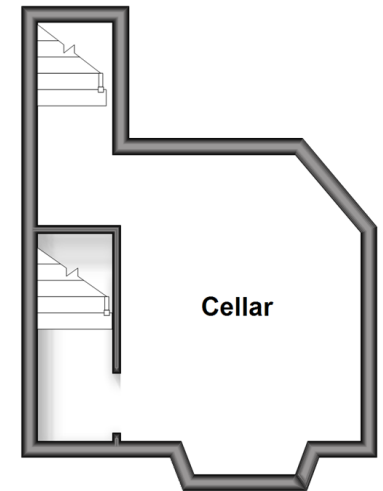
### Ground Floor

Approx. 42.0 sq. metres (451.7 sq. feet)



### Basement

Approx. 15.8 sq. metres (170.0 sq. feet)



**Call Gillingham - 01634 851191 ■ [wardsof Kent.co.uk](http://wardsof Kent.co.uk)**

- Legal advice should be taken to verify fixtures/fittings, planning, alterations and/or lease details
- Appliances & services are untested, dimensions are approximate and floor plans are not to scale
- Through a Homewise Home For Life Plan people aged 60+ can secure this property for up to 59% less, by purchasing a Lifetime Lease.



10927027/20240318/JS/GS