



**OVER 60?**

Secure this property  
for up to **59% less!**

**Price**

**£220,000**

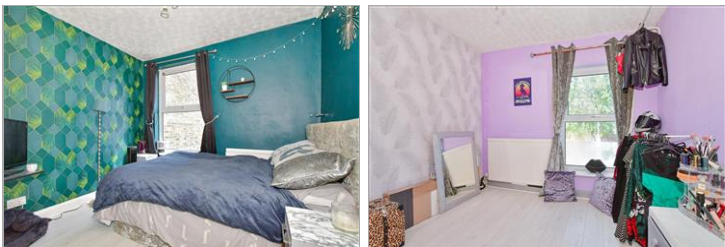
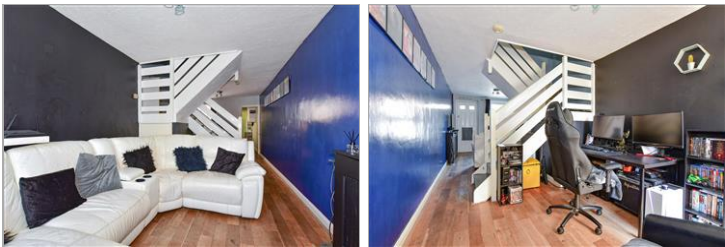
**Freehold**

2x  1x  1x 

**Skinner Street,  
Gillingham, Kent, ME7**

*Wards*  
Helping you move forwards





## Main features

- Much improved terraced house with double bedrooms; ideal for the first time buyer
- Gas central heating and double glazing
- Modern fitted kitchen
- Viewing recommended
- Easy walking distance of Gillingham High Street and mainline station

## Accommodation

### GROUND FLOOR

Lounge: 13'3 (4.04m) narrowing to 10'4 (3.15m) x 9'2 (2.80m)

Dining Area: 9'2 x 8'6 (2.80m x 2.59m)

Kitchen : 9'8 x 5'1 (2.95m x 1.55m)

Lobby

Bathroom

### BASEMENT

Cellar

### FIRST FLOOR

Landing

Bedroom 1: 9'3 x 8'4 (2.82m x 2.54m)

Bedroom 2: 9'9 x 9'3 (2.97m x 2.82m)

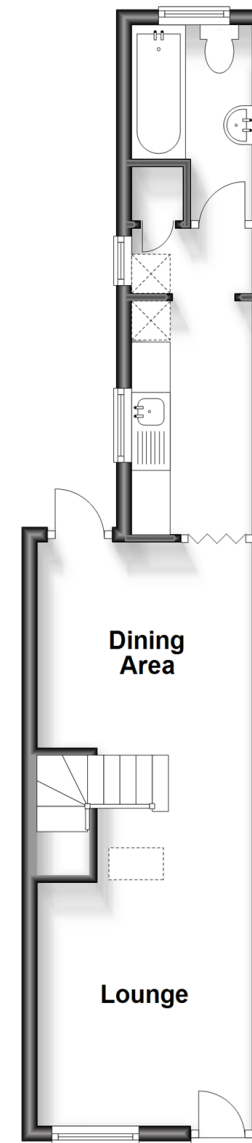
### OUTSIDE

Front Courtyard

Rear Garden

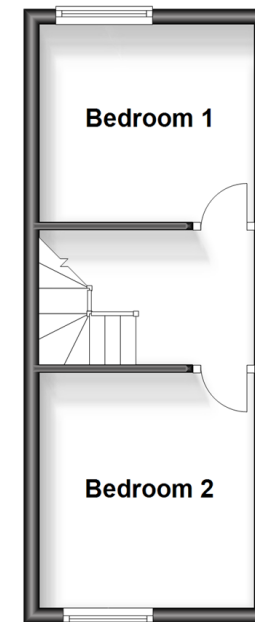
### Ground Floor

Approx. 31.4 sq. metres (338.0 sq. feet)



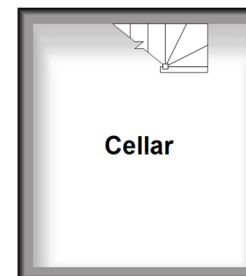
### First Floor

Approx. 21.0 sq. metres (225.7 sq. feet)



### Basement

Approx. 8.7 sq. metres (94.1 sq. feet)



**Call Gillingham - 01634 851191 ■ [wardsof Kent.co.uk](http://wardsof Kent.co.uk)**

- Legal advice should be taken to verify fixtures/fittings, planning, alterations and/or lease details
- Appliances & services are untested, dimensions are approximate and floor plans are not to scale
- Through a Homewise Home For Life Plan people aged 60+ can secure this property for up to 59% less, by purchasing a Lifetime Lease.



10927049/20230929/JS/GS