



Price
£240,000

Freehold

3x  1x  2x 

**Chaucer Road,
Gillingham, Kent, ME7**

OVER 60?

Secure this property
for up to **59% less!**

Wards
Helping you move forwards



Main features

- 2/3 bedroom Victorian terraced house situated in the popular Poet's Corner area of Upper Gillingham
- Modern kitchen & bathroom
- Gas central heating & double glazing
- Ideal first time purchase
- Walking distance of local shops, amenities & good road access

Accommodation

GROUND FLOOR

Lounge: 12'5 into bay x 12'0 (3.79m x 3.66m)

Middle Hallway

Dining Room: 12'0 x 10'4 (3.66m x 3.15m)

Kitchen: 9'9 x 7'2 (2.97m x 2.19m)

Lobby/Utility Area

Bathroom

SPLIT LEVEL FIRST FLOOR

Landing

Bedroom 1: 12'1 x 10'4 (3.69m x 3.15m)

Bedroom 2: 12'1 x 10'3 (3.69m x 3.13m)

Bedroom 3 (off of Bedroom 2): 10'0 x 7'3 (3.05m x 2.21m)

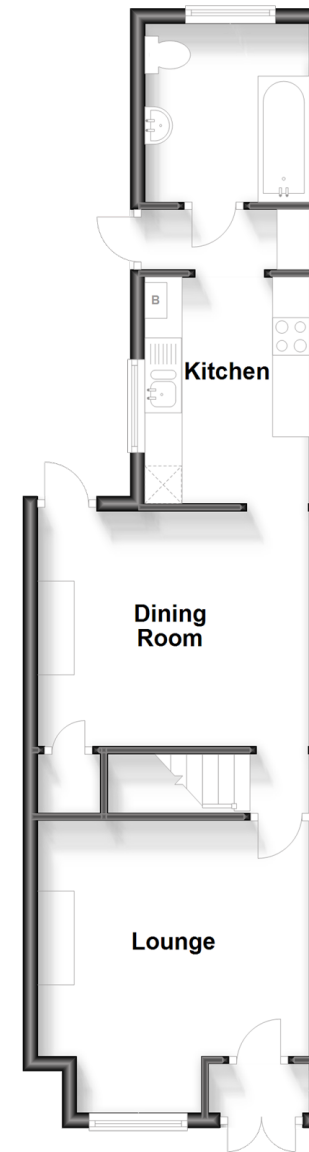
OUTSIDE

Front Garden

Rear Garden

Ground Floor

Approx. 43.9 sq. metres (473.0 sq. feet)



Split Level First Floor

Approx. 34.0 sq. metres (365.5 sq. feet)



Call Gillingham - 01634 851191 ■ wardsof Kent.co.uk

- Legal advice should be taken to verify fixtures/fittings, planning, alterations and/or lease details
- Appliances & services are untested, dimensions are approximate and floor plans are not to scale
- Through a Homewise Home For Life Plan people aged 60+ can secure this property for up to 59% less, by purchasing a Lifetime Lease.



10927057/20231014/JS/GS