



Price
£260,000

Freehold

3x  1x  2x 

**Gordon Road,
Gillingham, Kent, ME7**

OVER 60?

Secure this property
for up to **59% less!**

Wards
Helping you move forwards



Main features

- Victorian terraced house with separate bedrooms
- Ideal first time buy
- Spacious modern fitted kitchen
- Gas central heating and double glazing
- Situated within walking distance of Gillingham High Street & Main Line Station

Accommodation

GROUND FLOOR

Hallway

Lounge: 12'9 x 10'2 (3.89m x 3.10m)

Dining Room: 11'9 x 10'3 (3.58m x 3.13m)

Kitchen: 13'0 x 8'8 (3.97m x 2.64m)

Bathroom

BASEMENT

Cellar

SPLIT LEVEL FIRST FLOOR

Landing

Bedroom 1: 13'1 x 11'11 (3.99m x 3.63m)

Bedroom 3: 11'8 x 8'7 (3.56m x 2.62m)

Bedroom 2: 12'8 x 8'9 (3.86m x 2.67m)

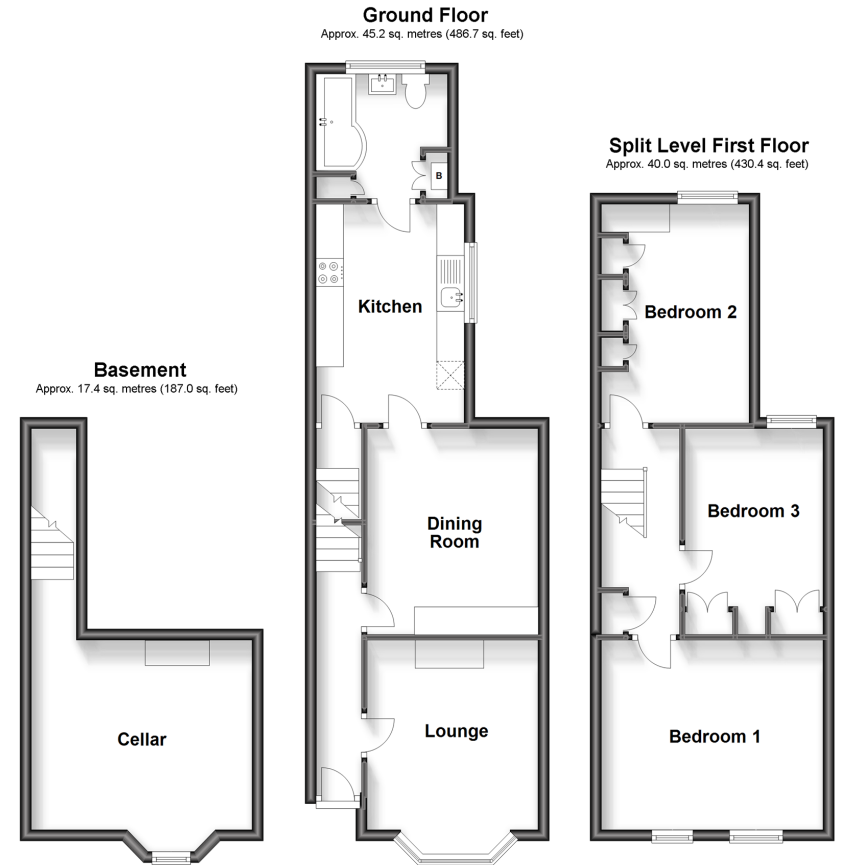
OUTSIDE

Front Garden

Rear Garden

Call Gillingham - 01634 851191 ■ wardsofkent.co.uk

- Legal advice should be taken to verify fixtures/fittings, planning, alterations and/or lease details
- Appliances & services are untested, dimensions are approximate and floor plans are not to scale
- Through a Homewise Home For Life Plan people aged 60+ can secure this property for up to 59% less, by purchasing a Lifetime Lease.



10927065/20231007/JS/GS