



**Price**  
**£220,000**

**Freehold**

3x  1x  2x 

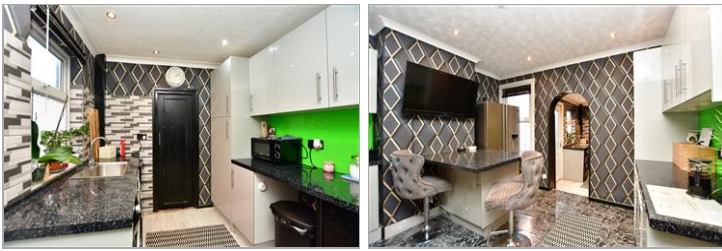
**Albany Road,  
Gillingham, Kent, ME7**

**OVER 60?**

Secure this property  
for up to **59% less!**

*Wards*  
Helping you move forwards





## Main features

- Well presented 2/3 bedroom Victorian terraced house; ideal first time buy
- Modern bathroom and large kitchen
- Gas central heating & double glazing
- Situated within walking distance of Gillingham High Street & Main Line Station
- Viewing highly recommended

## Accommodation

### GROUND FLOOR

Porch

Lounge: 12'6 into bay x 11'8 (3.81m x 3.56m)

Kitchen/Breakfast Room: 11'8 x 11'0 (3.56m x 3.36m)

Kitchen/Utility Room: 9'1 x 7'6 (2.77m x 2.29m)

Bathroom

### SPLIT LEVEL FIRST FLOOR

Landing

Bedroom 1: 11'8 x 9'9 (3.56m x 2.97m)

Bedroom 2: 11'8 x 11'0 (3.56m x 3.36m)

Bedroom 3 (Off of Bedroom 2): 8'0 x 7'7 (2.44m x 2.31m)

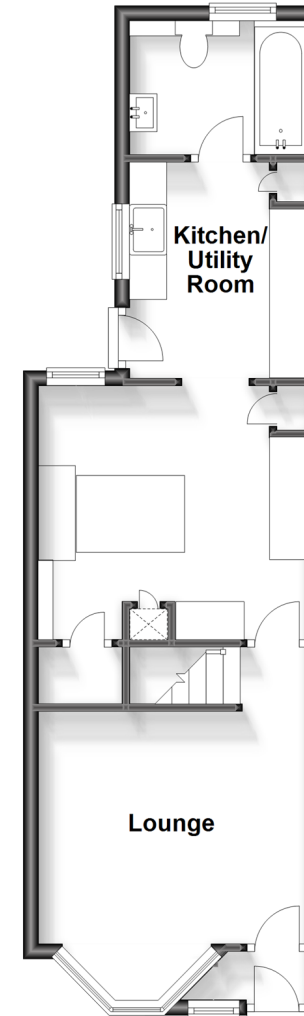
### OUTSIDE

Front Garden

Rear Garden

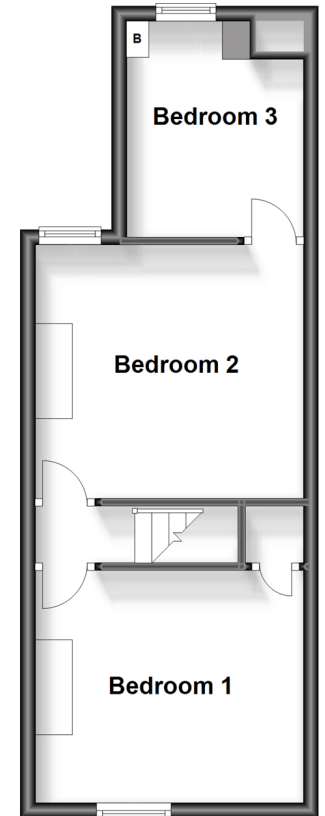
### Ground Floor

Approx. 39.2 sq. metres (421.6 sq. feet)



### Split Level First Floor

Approx. 33.5 sq. metres (361.0 sq. feet)



**Call Gillingham - 01634 851191 ■ [wardsofkent.co.uk](http://wardsofkent.co.uk)**

- Legal advice should be taken to verify fixtures/fittings, planning, alterations and/or lease details
- Appliances & services are untested, dimensions are approximate and floor plans are not to scale
- Through a Homewise Home For Life Plan people aged 60+ can secure this property for up to 59% less, by purchasing a Lifetime Lease.



10927078/20231009/JS/GS