



OVER 60?

Secure this property
for up to **59% less!**

Price

£210,000

Freehold

2x  1x  1x 

**Gardiner Street,
Gillingham, Kent, ME7**

Wards
Helping you move forwards



Main features

- Ideal for the first time buyer
- Gas central heating and double glazing
- Beautiful bathroom with roll top bath
- Modern fitted kitchen with integral appliances
- Walking distance of Gillingham High Street and Mainline Station

Accommodation

GROUND FLOOR

Lounge: 10'9 x 10'4 at narrowest point (3.28m x 3.15m)

Bathroom

Kitchen: 16'4 at widest point x 7'6 at widest point (4.98m x 2.29m)

FIRST FLOOR

Landing

Bedroom 1: 11'4 x 10'5 at narrowest point (3.46m x 3.18m)

Bedroom 2: 13'5 at widest point x 9'9 (4.09m x 2.97m)

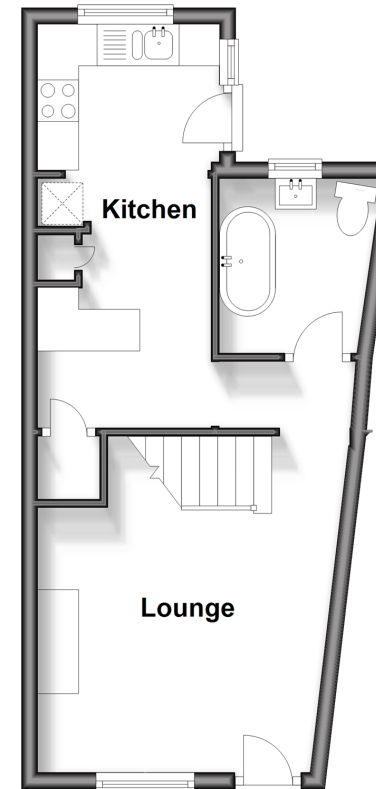
OUTSIDE

Front Garden

Rear Garden

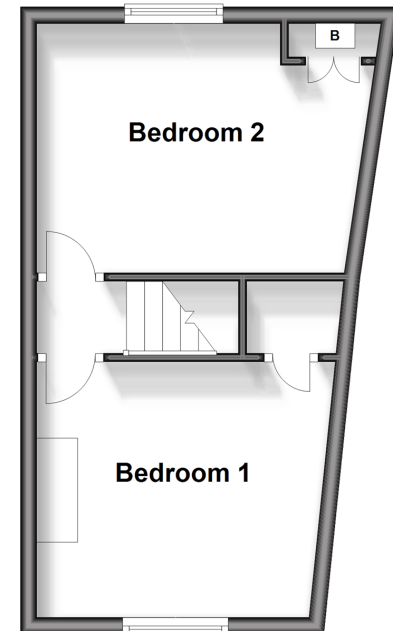
Ground Floor

Approx. 30.9 sq. metres (332.4 sq. feet)



First Floor

Approx. 26.6 sq. metres (286.3 sq. feet)



Call Gillingham - 01634 851191 ■ wardsof Kent.co.uk

- Legal advice should be taken to verify fixtures/fittings, planning, alterations and/or lease details
- Appliances & services are untested, dimensions are approximate and floor plans are not to scale
- Through a Homewise Home For Life Plan people aged 60+ can secure this property for up to 59% less, by purchasing a Lifetime Lease.



10927109/20231127/JS/GS