



**Price**  
**£240,000**

**Freehold**

3x  1x  1x 

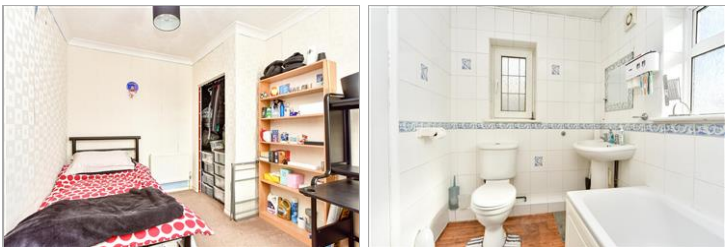
**St. George's Road,  
Gillingham, Kent, ME7**

**OVER 60?**

Secure this property  
for up to **59% less!**

*Wards*  
Helping you move forwards





## Main features

- **Spacious Victorian terraced house with separate bedrooms**
- **Downstairs bathroom & upstairs cloakroom**
- **Gas central heating & double glazing**
- **Ideal first time buy**
- **Within walking distance of Gillingham High Street and Mainline Station**

## Accommodation

### GROUND FLOOR

Porch

Lounge/Dining Area: 13'3 at widest point x 13'0 at widest point (4.04m x 3.97m) plus 11'9 at widest point x 10'7 at widest point (3.58m x 3.23m)

Kitchen: 11'5 x 8'4 (3.48m x 2.54m)

Lobby

Bathroom

### BASEMENT

Cellar: 13'5 x 13'1 (4.09m x 3.99m)

### FIRST FLOOR

Landing

Bedroom 1: 13'6 x 11'8 (4.12m x 3.56m)

Bedroom 2: 12'1 x 12'1 (3.69m x 3.69m)

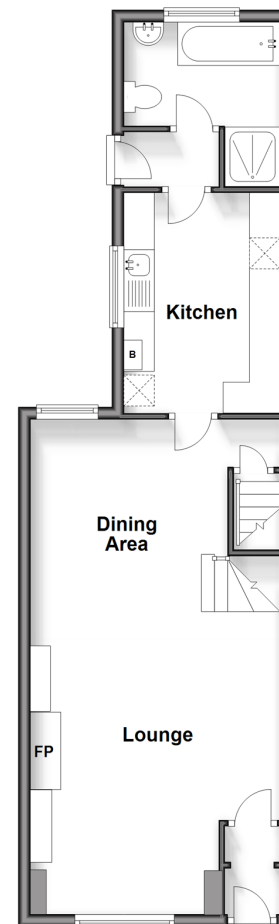
Cloakroom

Bedroom 3: 8'5 x 8'0 (2.57m x 2.44m)

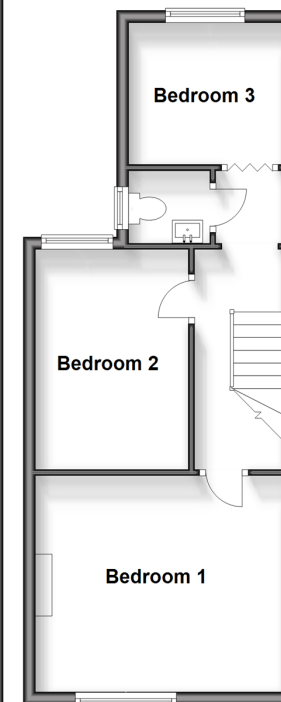
### OUTSIDE

Rear Garden

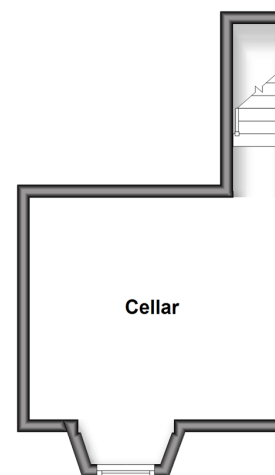
**Ground Floor**  
Approx. 49.3 sq. metres (530.1 sq. feet)



**First Floor**  
Approx. 38.7 sq. metres (417.0 sq. feet)



**Basement**  
Approx. 17.9 sq. metres (192.4 sq. feet)



**Call Gillingham - 01634 851191 ■ wardsof Kent.co.uk**

- Legal advice should be taken to verify fixtures/fittings, planning, alterations and/or lease details
- Appliances & services are untested, dimensions are approximate and floor plans are not to scale
- Through a Homewise Home For Life Plan people aged 60+ can secure this property for up to 59% less, by purchasing a Lifetime Lease.



10927110/20240424/JS/GS