



Price
£325,000

Freehold

3x  1x  2x 

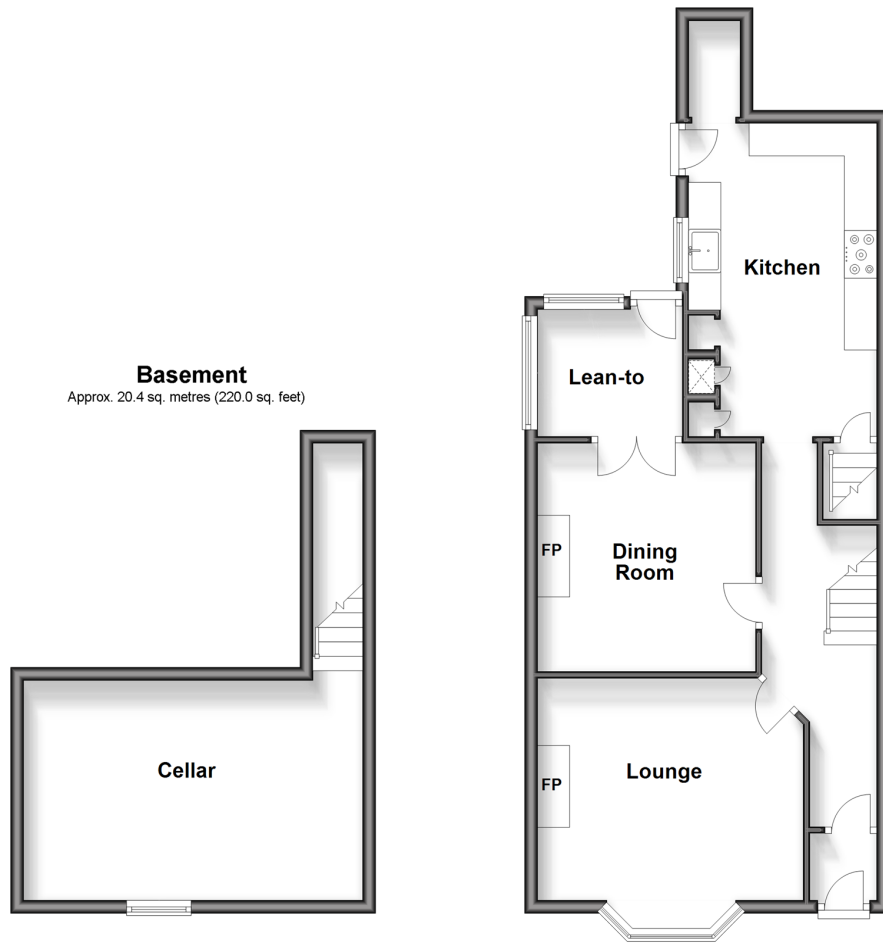
**Chester Road,
Gillingham, Kent, ME7**

OVER 60?

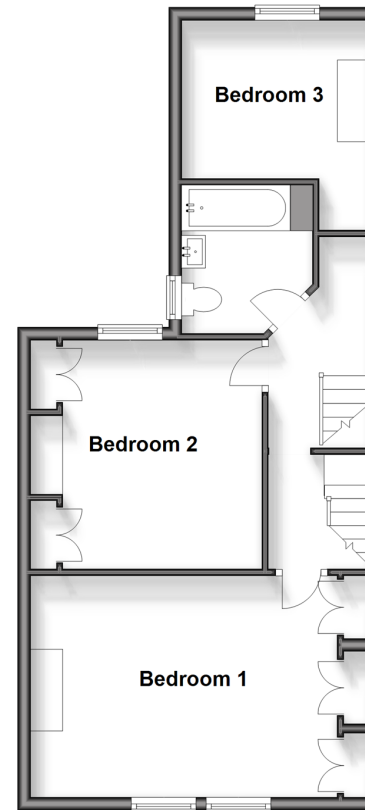
Secure this property
for up to **59% less!**

Wards
Helping you move forwards

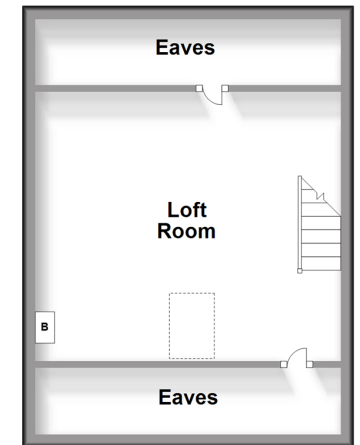
Ground Floor
Approx. 57.3 sq. metres (616.8 sq. feet)



First Floor
Approx. 51.0 sq. metres (549.0 sq. feet)



Second Floor
Approx. 30.0 sq. metres (323.1 sq. feet)



Accommodation

GROUND FLOOR

Porch
Entrance Hall
Lounge: 13'5 x 13'2 into bay (4.09m x 4.02m)
Dining Room: 11'6 x 11'4 (3.51m x 3.46m)
Lean-to
Kitchen: 16'4 x 8'5 (4.98m x 2.57m)

BASEMENT

Cellar: 17'3 x 11'0 (5.26m x 3.36m)

FIRST FLOOR

Landing
Bedroom 1: 17'3 x 11'0 (5.26m x 3.36m)
Bedroom 2: 12'0 x 11'7 (3.66m x 3.53m)
Bathroom
Bedroom 3: 8'4 x 7'8 (2.54m x 2.34m)

SECOND FLOOR

Loft Room: 15'6 x 13'4 (4.73m x 4.07m)

OUTSIDE

Front Garden
Rear Garden



Main features

- Spacious Edwardian terraced house with separate bedrooms and a generous loft room
- Large gloss finish fitted kitchen
- Gas central heating and double glazing
- Ideal family home
- Walking distance of local amenities and excellent road access



Nearest Schools

Primary: Byron Primary 0.3 miles, Luton Junior School 0.4 miles, Napier Community Primary and Nursery School 0.5 miles

Secondary: Chatham Grammar for Girls 0.2 miles, Robert Napier School 0.3 miles, Brompton Academy 0.8 miles



Transport Information

Train Stations: Gillingham 1.8 miles, Chatham 2.4 miles, Rochester 2.5 miles



Address

Chester Road, Gillingham, Kent, ME7



Directions

For directions to this property please contact us.





Wards
Helping you move forwards

Call Gillingham Branch 01634 851191 ■ wardsofkent.co.uk



■ Legal advice should be taken to verify fixtures/fittings, planning, alterations and/or lease details ■ Appliances & services are untested, dimensions are approximate and floor plans are not to scale
■ Through a Homewise Home For Life Plan people aged 60+ can secure this property for up to 59% less, by purchasing a Lifetime Lease.



10927111/20240125/JS/GS