



OVER 60?

Secure this property
for up to **59% less!**

Price

£230,000

Freehold

3x  1x  2x 

**Milton Road, Gillingham,
Kent, ME7**

Wards
Helping you move forwards



Main features

- Situated in the popular area of Poet's Corner with the third bedroom off the second bedroom
- Well presented home; making it an ideal first time buy
- Modern fitted kitchen
- Well tended rear garden
- Gas central heating and double glazing

Accommodation

GROUND FLOOR

Porch

Lounge: 12'3 x 10'2 (3.74m x 3.10m)

Dining Room: 12'6 x 10'2 (3.81m x 3.10m)

Kitchen: 9'9 x 7'2 (2.97m x 2.19m)

Bathroom

SPLIT LEVEL FIRST FLOOR

Landing

Bedroom 1: 12'3 x 10'3 (3.74m x 3.13m)

Bedroom 2: 12'4 x 10'2 (3.76m x 3.10m)

Bedroom 3 (off of Bedroom 2): 9'9 x 7'4 (2.97m x 2.24m)

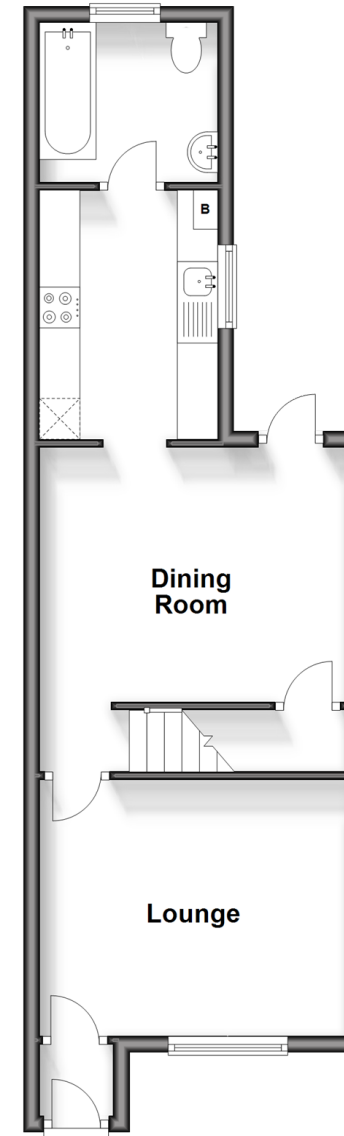
OUTSIDE

Front Garden

Rear Garden

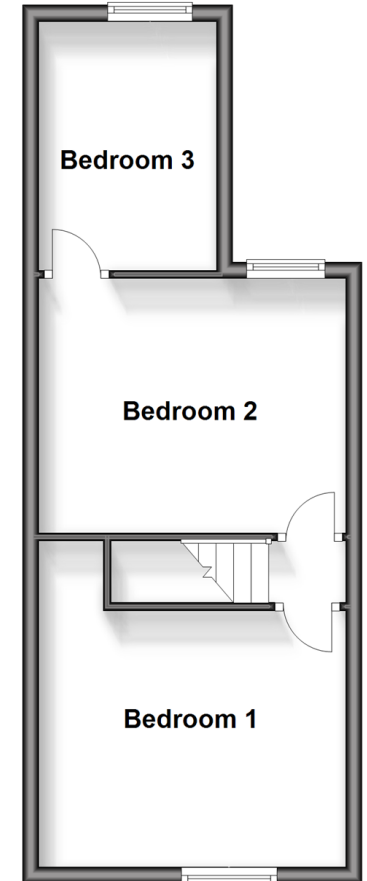
Ground Floor

Approx. 39.9 sq. metres (429.0 sq. feet)



Split Level First Floor

Approx. 34.4 sq. metres (370.6 sq. feet)



Call Gillingham - 01634 851191 ■ wardsofkent.co.uk

- The seller is a person connected with Wards as defined in the Estate Agents Act 1979
- Legal advice should be taken to verify fixtures/fittings, planning, alterations and/or lease details
- Appliances & services are untested, dimensions are approximate and floor plans are not to scale
- Through a Homewise Home For Life Plan people aged 60+ can secure this property for up to 59% less, by purchasing a Lifetime Lease.



10927114/20240106/JS/GS