



Price
£190,000

Leasehold

2x  1x  1x 

**Aylmer Court, Saunders
Street, Gillingham, Kent,
ME7**

OVER 60?

Secure this property
for up to **59% less!**

Wards
Helping you move forwards



Main features

- Extremely spacious second floor flat
- Long lease
- 2 allocated parking spaces
- Double glazing and storage heating
- Situated within walking distance of Gillingham High Street & Main Line Station

Accommodation

SECOND FLOOR

Hall

Bathroom

Kitchen: 7'8 x 7'1 (2.34m x 2.16m)

Lounge/Diner: 18'5 x 9'4 (5.62m x 2.85m)

Bedroom 1: 12'4 x 11'2 (3.76m x 3.41m)

Dressing Area: 11'8 at widest point x 5'0 at widest point (3.56m x 1.53m)

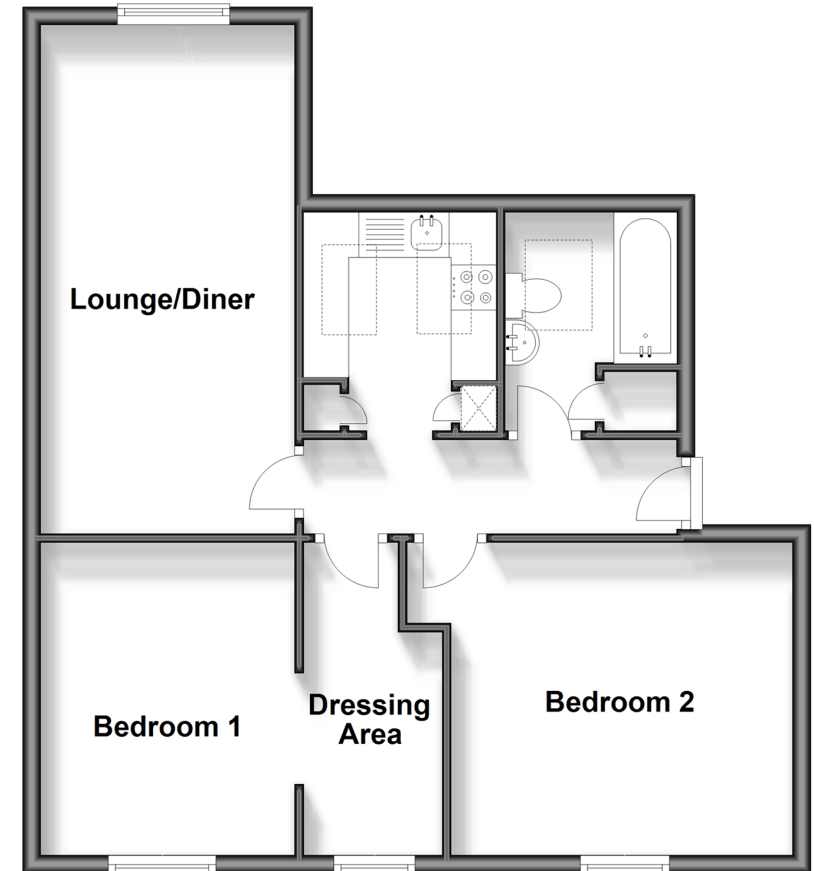
Bedroom 2: 11'7 x 9'4 (3.53m x 2.85m)

OUTSIDE

Allocated Parking For 2 Cars

Second Floor

Approx. 60.6 sq. metres (652.5 sq. feet)



Call Gillingham - 01634 851191 ■ wardsof Kent.co.uk

- Legal advice should be taken to verify fixtures/fittings, planning, alterations and/or lease details
- Appliances & services are untested, dimensions are approximate and floor plans are not to scale
- Through a Homewise Home For Life Plan people aged 60+ can secure this property for up to 59% less, by purchasing a Lifetime Lease.



10927136/20240202/JS/GS