



Price
£280,000

Freehold

3x  1x  1x 

**Saunders Street,
Gillingham, Kent, ME7**

OVER 60?

Secure this property
for up to **59% less!**

Wards
Helping you move forwards



Main features

- Great sized home - Ideal first time buy or for a young family
- Immaculate kitchen and newly renovated shower room
- Gas central heating and double glazing
- Low maintenance rear garden
- Short walk to Gillingham High Street and Main Line Station

Accommodation

SPLIT LEVEL GROUND FLOOR

Lounge: 13'0 x 11'0 (3.97m x 3.36m)
 Kitchen: 12'0 x 7'11 at widest point (3.66m x 2.41m)
 Utility Room: 6'1 x 5'0 (1.86m x 1.53m)
 Cloakroom

BASEMENT

Cellar: 13'0 x 11'0 (3.97m x 3.36m)

FIRST FLOOR

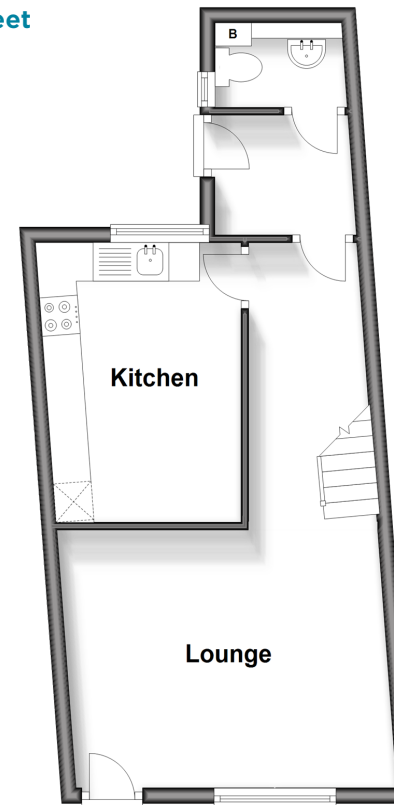
Landing
 Bedroom 1: 12'0 at widest point x 11'0 at widest point (3.66m x 3.36m)
 Shower Room
 Bedroom 3: 11'0 x 6'1 (3.36m x 1.86m)
 Bedroom 2: 11'0 x 9'0 (3.36m x 2.75m)

OUTSIDE

Front Garden
 Rear Garden

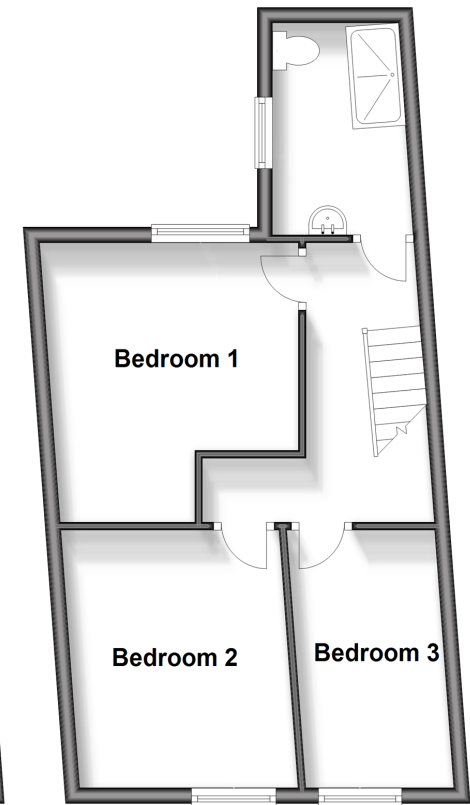
Split Level Ground Floor

Approx. 35.0 sq. metres (376.7 sq. feet)



First Floor

Approx. 40.0 sq. metres (430.8 sq. feet)



Call Gillingham - 01634 851191 ■ wardsof Kent.co.uk

- Legal advice should be taken to verify fixtures/fittings, planning, alterations and/or lease details
- Appliances & services are untested, dimensions are approximate and floor plans are not to scale
- Through a Homewise Home For Life Plan people aged 60+ can secure this property for up to 59% less, by purchasing a Lifetime Lease.



10927145/20240229/AC/AC