



Price
£240,000

Freehold

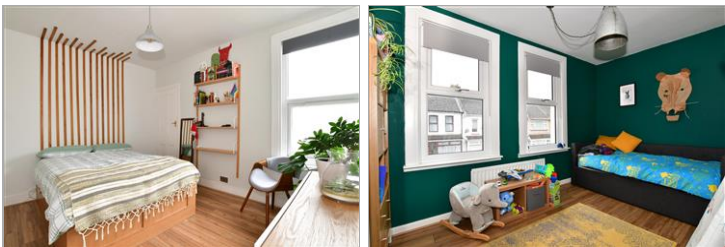
3x  1x  2x 

**Milton Road, Gillingham,
Kent, ME7**

OVER 60?

Secure this property
for up to **59% less!**

Wards
Helping you move forwards



Main features

- Terraced house with the third bedroom off the second bedroom
- Immaculate home - ideal first time buy
- Modern bathroom and kitchen
- Gas central heating and double glazing
- Situated in the popular area of Poet's Corner

Accommodation

SPLIT LEVEL GROUND FLOOR

Porch

Lounge: 13'0 at widest point x 13'0 at widest point (3.97m x 3.97m)

Dining Area: 13'2 x 10'5 (4.02m x 3.18m)

Kitchen: 9'2 x 7'9 (2.80m x 2.36m)

Bathroom

SPLIT LEVEL FIRST FLOOR

Landing

Bedroom 1: 13'1 x 10'0 (3.99m x 3.05m)

Bedroom 2: 13'0 x 10'0 (3.97m x 3.05m)

Bedroom 3 (off of Bedroom 2): 9'0 x 7'1 (2.75m x 2.16m)

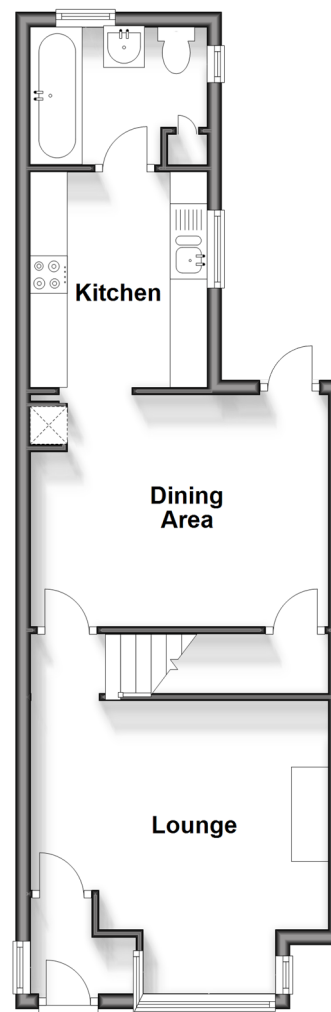
OUTSIDE

Front Garden

Rear Garden

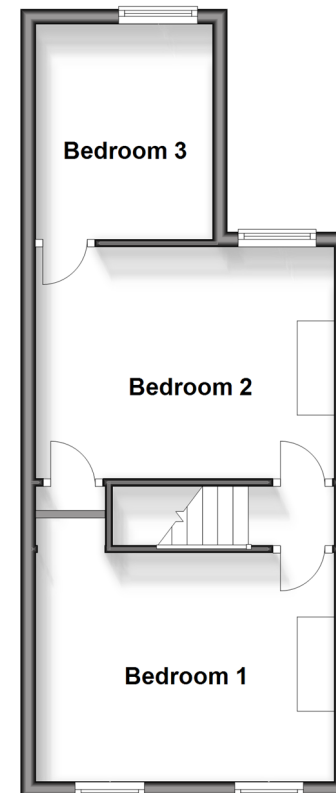
Split Level Ground Floor

Approx. 43.1 sq. metres (463.5 sq. feet)



Split Level First Floor

Approx. 35.7 sq. metres (383.8 sq. feet)



Call Gillingham - 01634 851191 ■ wardsofkent.co.uk

- Legal advice should be taken to verify fixtures/fittings, planning, alterations and/or lease details
- Appliances & services are untested, dimensions are approximate and floor plans are not to scale
- Through a Homewise Home For Life Plan people aged 60+ can secure this property for up to 59% less, by purchasing a Lifetime Lease.



10927155/20240125/JS/AC