



Price
£230,000

Freehold

3x  1x  2x 

**May Road, Gillingham,
Kent, ME7**

OVER 60?

Secure this property
for up to **59% less!**

Wards
Helping you move forwards



Main features

- **2/3 bedroom terraced house in a popular area of Gillingham**
- **Gas central heating and double glazing**
- **Ideal purchase for first time buyers and investors alike**
- **Walking distance of Gillingham High Street and Mainline Station**
- **Chain free**

Accommodation

GROUND FLOOR

Lounge: 12'7 x 10'0 into bay (3.84m x 3.05m)
 Dining Room: 12'6 x 10'7 (3.81m x 3.23m)
 Kitchen: 9'1 x 7'7 (2.77m x 2.31m)
 Bathroom

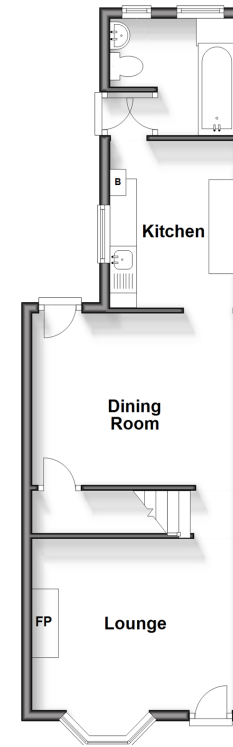
FIRST FLOOR

Landing
 Bedroom 1: 10'1 x 10'0 (3.08m x 3.05m)
 Bedroom 2: 12'6 x 10'7 (3.81m x 3.23m)
 Bedroom 3 (off of Bedroom 2): 9'1 x 7'6 (2.77m x 2.29m)

OUTSIDE

Front Garden
 Rear Garden

Ground Floor
 Approx. 40.5 sq. metres (436.0 sq. feet)



First Floor
 Approx. 35.1 sq. metres (377.7 sq. feet)



Call Gillingham - 01634 851191 ■ wardsofkent.co.uk

■ Legal advice should be taken to verify fixtures/fittings, planning, alterations and/or lease details
 ■ Through a Homewise Home For Life Plan people aged 60+ can secure this property for up to 59% less, by purchasing a Lifetime Lease.

■ Appliances & services are untested, dimensions are approximate and floor plans are not to scale



10927161/20240125/JS/AC