



Price
£240,000

Freehold

2x  1x  1x 

**Belmont Road,
Gillingham, Kent, ME7**

OVER 60?

Secure this property
for up to **59% less!**

Wards
Helping you move forwards



Main features

- Chain free Victorian end of terrace house
- Ideal first time buy
- Extremely rare benefit of off-road parking
- Separate upstairs bathroom and downstairs toilet
- Gas central heating & double glazing

Accommodation

GROUND FLOOR

Entrance Hall

Lounge: 13'0 x 11'7 (3.97m x 3.53m)

Kitchen/Dining Area: 16'8 x 8'3 (5.08m x 2.52m)

Separate Toilet

Lean-To

SPLIT LEVEL FIRST FLOOR

Landing

Bedroom 1: 12'9 x 9'4 (3.89m x 2.85m)

Bedroom 2: 10'1 x 8'3 (3.08m x 2.52m)

Bathroom

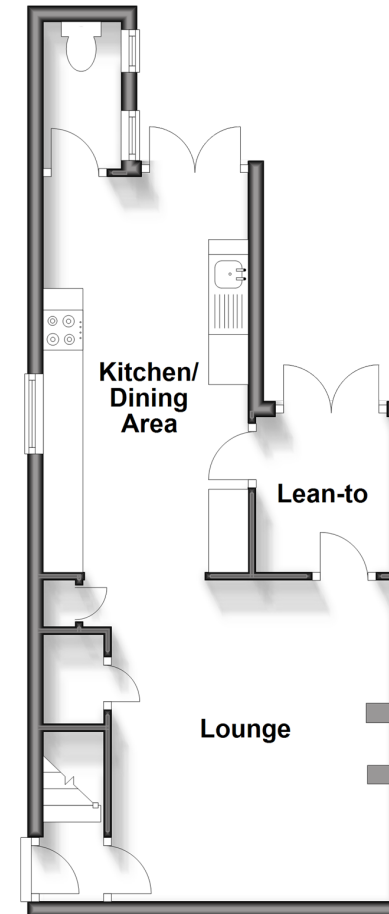
OUTSIDE

Rear Garden

Off-Road Parking To Rear

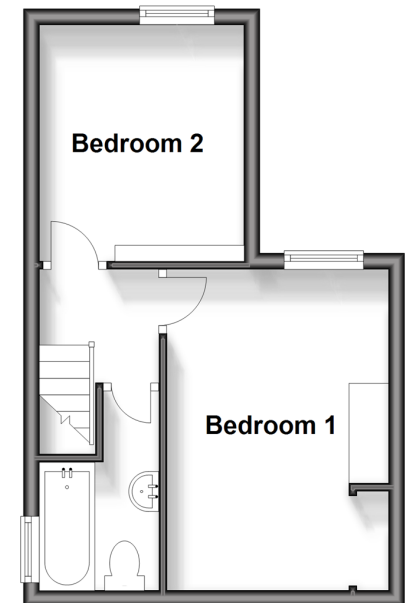
Ground Floor

Approx. 36.3 sq. metres (390.2 sq. feet)



Split Level First Floor

Approx. 25.5 sq. metres (274.7 sq. feet)



Call Gillingham - 01634 851191 ■ wardsofkent.co.uk

- Legal advice should be taken to verify fixtures/fittings, planning, alterations and/or lease details
- Appliances & services are untested, dimensions are approximate and floor plans are not to scale
- Through a Homewise Home For Life Plan people aged 60+ can secure this property for up to 59% less, by purchasing a Lifetime Lease.



10927182/20240417/JS/GS