



OVER 60?

Secure this property
for up to **59% less!**

Price

£240,000

Freehold

3x  1x  2x 

**Tennyson Road,
Gillingham, Kent, ME7**

Wards
Helping you move forwards



Main features

- Victorian terraced house with separate bedrooms
- Good size kitchen and lean-to
- Generous garden
- Gas central heating & double glazing
- Situated in the popular area of Poet's Corner in Upper Gillingham
- Ideal first time buy

Accommodation

SPLIT LEVEL GROUND FLOOR

Porch

Lounge: 13'6 into bay x 13'3 (4.12m x 4.04m)

Dining Room: 11'6 x 10'5 (3.51m x 3.18m)

Kitchen: 10'4 x 8'5 (3.15m x 2.57m)

Lean-to: 10'7 x 4'2 (3.23m x 1.27m)

Bathroom

SPLIT LEVEL FIRST FLOOR

Landing

Bedroom 1: 13'1 x 11'3 (3.99m x 3.43m)

Bedroom 2: 11'8 x 8'2 (3.56m x 2.49m)

Bedroom 3: 10'4 at widest point x 7'9 at widest point (3.15m x 2.36m)

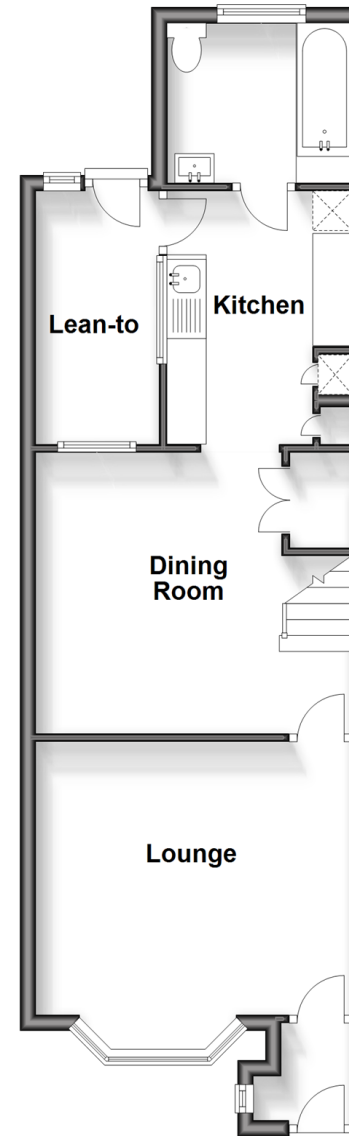
OUTSIDE

Front Garden

Rear Garden

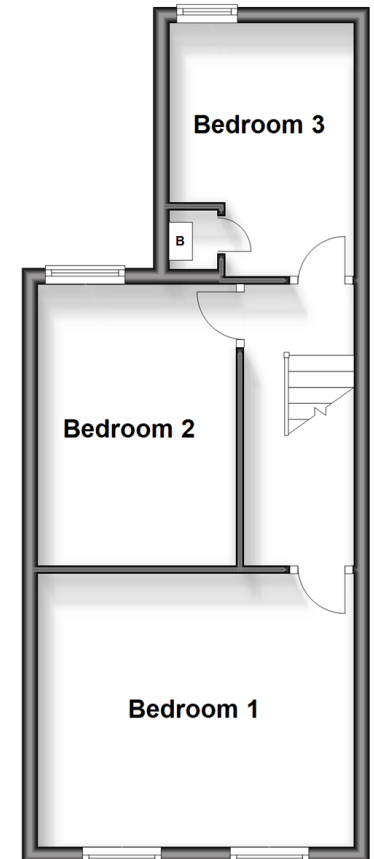
Split Level Ground Floor

Approx. 48.5 sq. metres (522.2 sq. feet)



Split Level First Floor

Approx. 36.4 sq. metres (391.5 sq. feet)



Call Gillingham - 01634 851191 ■ wardsofkent.co.uk

- Legal advice should be taken to verify fixtures/fittings, planning, alterations and/or lease details
- Appliances & services are untested, dimensions are approximate and floor plans are not to scale
- Through a Homewise Home For Life Plan people aged 60+ can secure this property for up to 59% less, by purchasing a Lifetime Lease.



10927195/20240320/JS/GS