



OVER 60?

Secure this property
for up to **59% less!**

Price

£300,000

Freehold

3x  1x  1x 

**Beresford Road, Upper
Gillingham, Kent, ME7**

Wards
Helping you move forwards



Main features

- Victorian terraced house with separate bedrooms and upstairs bathroom
- Spacious living accommodation and cellar room
- Gas central heating & double glazing
- Large gloss finish kitchen
- Garage situated at the rear with additional off-road parking

Accommodation

SPLIT LEVEL GROUND FLOOR

Porch
Lounge: 13'4 into bay x 10'9 (4.07m x 3.28m)
Dining Area: 12'0 x 11'3 (3.66m x 3.43m)
Kitchen: 15'5 x 8'8 (4.70m x 2.64m)
Cloakroom

BASEMENT

Cellar Room: 14'8 x 11'10 (4.47m x 3.61m)

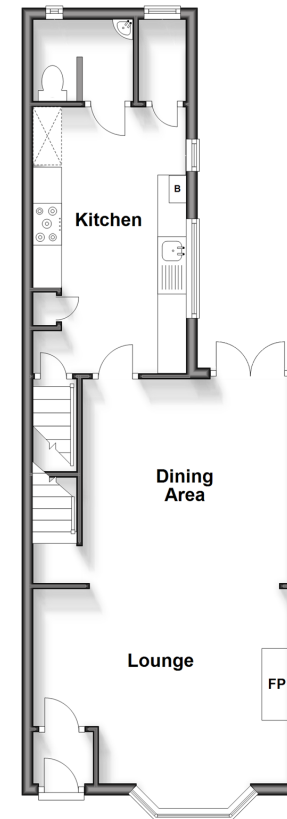
FIRST FLOOR

Landing
Bedroom 1: 14'1 x 11'7 (4.30m x 3.53m)
Bedroom 2: 11'3 x 9'0 (3.43m x 2.75m)
Bathroom
Bedroom 3: 8'9 x 6'8 (2.67m x 2.03m)

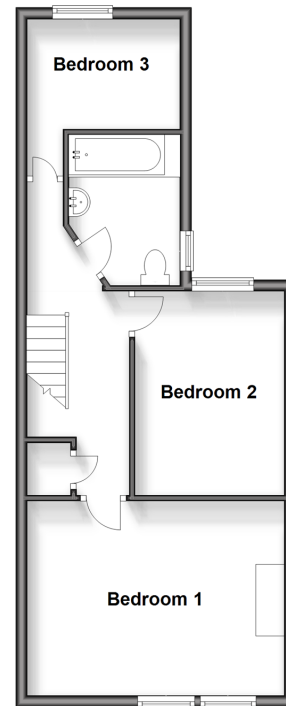
OUTSIDE

Front Garden
Rear Garden
Garage to Rear
Off-Road Parking to Rear

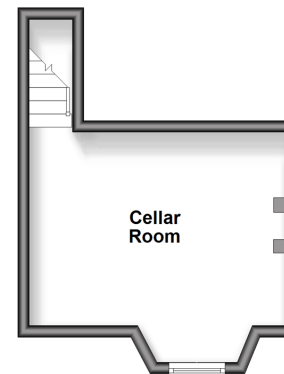
Split Level Ground Floor
Approx. 48.9 sq. metres (526.4 sq. feet)



First Floor
Approx. 44.5 sq. metres (479.5 sq. feet)



Basement
Approx. 17.8 sq. metres (191.3 sq. feet)



Call Gillingham - 01634 851191 ■ wardsofkent.co.uk

- Legal advice should be taken to verify fixtures/fittings, planning, alterations and/or lease details
- Appliances & services are untested, dimensions are approximate and floor plans are not to scale
- Through a Homewise Home For Life Plan people aged 60+ can secure this property for up to 59% less, by purchasing a Lifetime Lease.



11020398/20240206/AC/GS