



OVER 60?

Secure this property
for up to **59% less!**

Price

£240,000

Freehold

3x  1x  2x 

**Milton Road, Gillingham,
Kent, ME7**

Wards
Helping you move forwards



Main features

- 2/3 bedroom Victorian terraced house - ideal first time buy
- Modern fitted kitchen and shower room
- Separate dining room and lounge
- Gas central heating and double glazing
- Situated in Upper Gillingham in the popular area of Poet's Corner

Accommodation

GROUND FLOOR

Porch

Lounge: 12'6 into bay x 10'1 (3.81m x 3.08m)

Dining Room : 12'2 x 10'3 (3.71m x 3.13m)

Kitchen : 9'1 x 7'5 (2.77m x 2.26m)

Lobby

Shower Room

SPLIT LEVEL FIRST FLOOR

Landing

Bedroom 1: 12'4 x 10'7 (3.76m x 3.23m)

Bedroom 2: 12'6 x 10'4 (3.81m x 3.15m)

Bedroom 3 (off of Bedroom 2): 9'9 x 9'3 (2.97m x 2.82m)

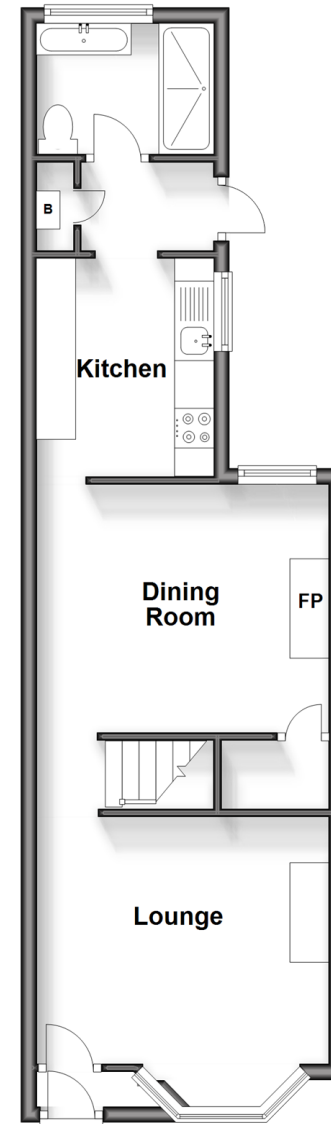
OUTSIDE

Front Garden

Rear Garden

Ground Floor

Approx. 41.3 sq. metres (444.6 sq. feet)



Split Level First Floor

Approx. 33.6 sq. metres (361.7 sq. feet)



Call Gillingham - 01634 851191 ■ wardsof Kent.co.uk

- Legal advice should be taken to verify fixtures/fittings, planning, alterations and/or lease details
- Appliances & services are untested, dimensions are approximate and floor plans are not to scale
- Through a Homewise Home For Life Plan people aged 60+ can secure this property for up to 59% less, by purchasing a Lifetime Lease.



11024689/20240103/JS/AC